

## Security Distribution Box Code



## Security Distribution Box Code



To report your loan that is treated as a deemed distribution into the program, please follow the pathway below and enter Code L plus distribution Code 1 or Code B, (whichever is applicable) in box 7.



The image below highlights the 1099-R boxes most frequently used—and their explanations—for defined contribution plan distributions. The following chart provides the distribution codes for Box 7 for ...



Use Table 1 to determine the appropriate code (s) to enter in box 7 for any amounts reported on Form 1099-R. Read the codes carefully and enter them accurately because the IRS uses the codes to help ...



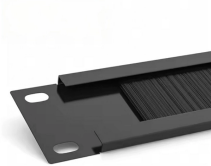
Box 7, titled “Distribution Code (s),” is perhaps the most important field on the entire form. The code entered here specifies the exact nature of the distribution event.



Because the distribution of elective deferrals (other than designated Roth contributions) is fully taxable in the year distributed (no part of the distribution is a return of the investment in the contract), report the ...



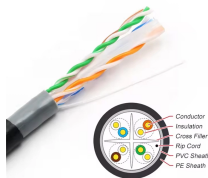
Learn what each box on Form 1099-R means, how distribution codes affect your taxes, and what to do when reporting retirement income on your return.



Box 7 of the form contains one or two distribution codes, which provides certain information to the IRS. The 1099-R code (s) will vary based on factors such as the source of the ...



The codes in Box 7 of your Form 1099-R indicate the type of distribution you received. We'll use these codes and your answers to some interview questions to help us determine if your distribution is ...



In this comprehensive guide, we'll explain every 1099-R distribution code in detail, when to use each code, common coding mistakes to avoid, and how modern e-filing solutions like BoomTax can help ...



Box 7, Distribution code (s), the shorthand that drives tax treatment and potential penalties. If you rolled money directly from one plan to another, that is generally non-taxable and is ...



Box 7 in Form 1099-R is used to identify the type of distribution the recipient received and aids in determining the taxability of the distribution. There are approximately 29 alphanumeric codes, and ...

## Contact Us

For more information, pricing, or custom energy solutions, please contact us:

Website: <https://www.gdroofing.co.za>

Email: [sales@gdroofing.co.za](mailto:sales@gdroofing.co.za)

Phone: +27 72 418 9365

Address: 22 Electron Avenue, Isando, Johannesburg, 1600, South Africa

This document is for informational purposes only. Specifications subject to change without notice.

