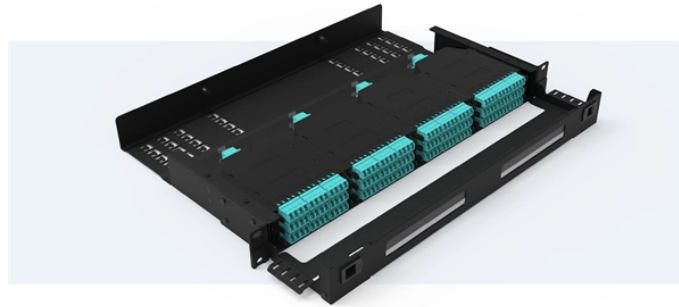


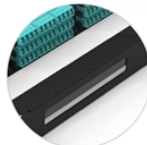
Shaft Splitter Construction

Pre-Terminated Patch Panel

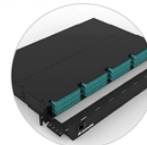
- Standard 19" width
- Max 144 fibers in 1U
- MPO/Fusion Dual-Purpose



Removable Cable Management Tray



Transparent Front Cover



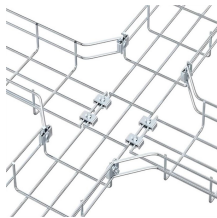
High-Quality Matte Coated Steel



In the aforementioned splitter transmissions are gear units that can represent multiple ratios with only small increments and are usually switchable under load. Typically, such a splitter gear...



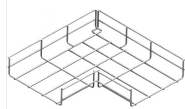
The splitter section, normally installed coaxially behind the primary box, acts as a two-speed multiplier. It operates each gear proportion selected in the main box, efficiently breaking each ...



A splitter gearbox efficiently distributes mechanical power to multiple outputs using a combination of shafts and gears. Its robust construction ensures reliability in demanding applications, ...



In this second of our two-part series on automated manual transmissions, Brian Tingham talks again to Scania technical instructor Keith Gallon about gearbox construction and operation, and ...



The wide range of splitter box, split shaft pto's and transfer cases offered covers low duty all the way to extreme heavy duty application both in vertical and horizontal configuration to meet all custom body ...



A broken input shaft in the 850BLT splitter box compromises power transfer. Using a used shaft and hub can be cost-effective but inspect for cracks, wear, and straightness.



A kinetic splitter was built around a toothed strip module, a carriage, and bearing mounts made from 10 mm sheet metal. The splitter engages when the pressure of the toothed bar drives a ...

Contact Us

For more information, pricing, or custom energy solutions, please contact us:

Website: <https://www.gdroofing.co.za>

Email: sales@gdroofing.co.za

Phone: +27 72 418 9365

Address: 22 Electron Avenue, Isando, Johannesburg, 1600, South Africa

This document is for informational purposes only. Specifications subject to change without notice.

