

Should low-voltage electrical conduits be run through cable trays



Overview

The answer is no, most of the time, because trays are made to remain open so that the air passes around the wires to cool them. The decision to use a cable tray or a conduit does not involve a search for which one is better. Cable tray is the preferred wiring method for industrial facilities, data centers, and large commercial buildings where routing dozens or hundreds of cables through individual conduits would be impractical and expensive. NEC section 300-8 does not permit. My understanding of low voltage wiring such as Data (Cat6), TV (coax), and security camera can be run exposed by J-hooks or in cable trays/snake trays. Whether you're an electrician, HVAC technician, or smart home installer, understanding how to choose and use low voltage conduit properly will. Why It Matters: Power conductors can induce noise into nearby limited energy and communications cabling, creating latency, packet loss, or disrupted signaling. EMI risk increases with parallel runs and long shared pathways. Best Practice: Maintain TIA-569-E spacing between power and LE circuits.

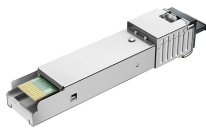
Should low-voltage electrical conduits be run through cable trays



Cable trays and conduits serve different yet complementary purposes. Trays support large numbers of power and control cables, while conduits offer mechanical protection, especially in ...



To answer your question, to pass through walls, always consider future Upgrades. If the customer calls for 1 inch penetrations through walls maybe throw in 2 inch OR larger and ask the ...



The decision on whether to use a cable tray or a conduit lies on the scale of the job as well as the amount of heat the wires will generate. Cable trays are more preferable in large buildings ...



Tray cables are fundamentally designed for use in cable trays rather than conduit. However, conduit becomes necessary when cables are underground and not direct-burial rated, in ...



Learn what low voltage conduit is, when to use it, and which type fits your project. Expert tips on materials, installation, and NEC safety compliance.



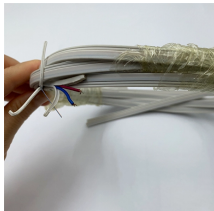
This guide covers the cable tray types and their appropriate applications, the fill rules for each configuration, ampacity derating requirements, separation of power and signal cables, and the ...



If you're not looking to get expensive grounding bushings you can get plastic "bang-on" bushings to cap the ends of the conduit. Some people like going through the side walls of the basket tray, but this can ...



Why It Matters: High-voltage and limited energy circuits routed too closely can cause cross-talk, distortion, or packet errors, especially in dense cable trays or congested ceiling spaces.



TRAY AND CONDUIT TO CONDUIT SHALL BE THE SAME. 9. WHEN A BOX, PULL SLEEVE, OR CONDULET IS INSTALLED IN A CONDUIT IN A PARALLEL RUN OF CONDUITS, THE ...



Question 1: Can mechanical utility piping or tubing containing water or compressed air be installed in cable trays with electrical cables? Answer: No. Cable trays are a support system for electrical cables, ...

Contact Us

For more information, pricing, or custom energy solutions, please contact us:

Website: <https://www.gdroofing.co.za>

Email: sales@gdroofing.co.za

Phone: +27 72 418 9365

Address: 22 Electron Avenue, Isando, Johannesburg, 1600, South Africa

This document is for informational purposes only. Specifications subject to change without notice.

