

Single-mode optical module polarity



Overview

In any installation, it is important to ensure that the optical transmitter at one end is connected to the optical receiver at the other. This matching of the transmit signal (Tx) to the receive equipment (Rx) at both.



Single-mode optical module polarity



Correct polarity is essential for efficient, high-performance fiber optic networks, especially in data centers and enterprise networks that rely on high-density, parallel connections. This article describes the ...



Universal Polarity Management Method nt of the TIA standard. The method uses the same module and patch cord type at both ends with no inversion or reconfiguration need d to maintain polarity. Polarity ...



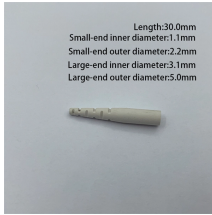
2. Polarity Overview Two types of fiber links are outlined in the TIA standard: serial duplex signals connections and parallel signals connections. This paper discusses the impact of polarity as it ...



This document outlines the wiring methods in the TIA-568-C.0 standard to achieve the proper polarity (each transmit signal is connected to the correct receive port) in fiber systems using MTP® connectors.



There are a number of special types of single-mode optical fiber which have been chemically or physically altered to give special properties, such as dispersion-shifted fiber and nonzero dispersion ...



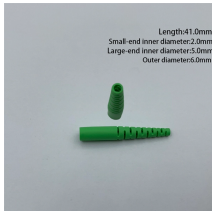
Is your data center or campus network best served by Single Mode or Multimode Optical Modules? Choosing between Single Mode and Multimode Optical Modules will shape cost, reach and upgrade ...



To ensure that the basic principle of each signal path - connect the transmitter and receiver - is fulfilled, each single part of the path should have a proper polarity - not only the main multifibre harness.



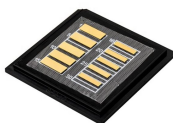
Polarization-maintaining single- mode fibers (PM fibers) are rotation-ally non-symmetric because of inte-grated stress elements, for example, that break the degeneracy of the two principle states of ...



Single-mode fibers (also called monomode fibers) are optical fibers which are designed such that they support only a single propagation mode (LP 01) per polarization direction for a given wavelength.



It enables Ethernet-like links with 1, 2, 4, or 8 lanes for data centers, using low power, high port density, low cost, and low latency pluggable transceiver modules in form factors such as QSFP, QSFP-DD, ...



Single-mode fiber supports a mode, which in fact consists of two orthogonal polarization modes. Ideally, the core of an optical fiber is perfectly circular. However, in reality, the core is not perfectly circular, ...

Contact Us

For more information, pricing, or custom energy solutions, please contact us:

Website: <https://www.gdroofing.co.za>

Email: sales@gdroofing.co.za

Phone: +27 72 418 9365

Address: 22 Electron Avenue, Isando, Johannesburg, 1600, South Africa

This document is for informational purposes only. Specifications subject to change without notice.

