

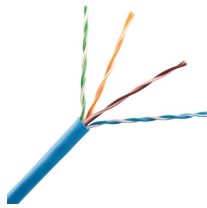
## Single-phase circuit burnout in distribution box



## Single-phase circuit burnout in distribution box



The document provides detailed guidance on wiring a single-phase distribution board, also known as a consumer unit, including necessary components and installation methods.



When the loads across the three phases are significantly unbalanced, the current in the neutral line can exceed its rated capacity. This is especially common in systems with a large number of single-phase ...



Single Phase Distribution Board Wiring. Wiring a Distribution Board is vital in any electrical installation.



Learn about what power quality is and different power quality problems in the distribution network such as single phasing, voltage fluctuation, power factor, improper phase sequence, voltage unbalance, ...



Single-phase and split phase AC power are the standard for residential and light commercial distribution around the world, and single-phase electrical equipment is common in industry.



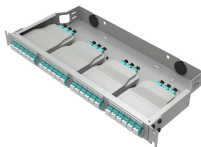
Master the safest and most efficient circuit breaker wiring configurations. Learn about single-phase vs. three-phase setups, safety standards, and future-proof electrical ...



Learn how to wire a single-phase breaker box with a comprehensive wiring diagram. Ensure a safe and efficient electrical setup.



Single/Three-phase system acting up? Learn to troubleshoot voltage imbalances, overheating, and more. Get expert solutions & fix your electrical system - [click here!](#)



Hey, in this article we are going to see the Single Phase Distribution Box Wiring Diagram and Connection Procedure. A distribution board or distribution box is where the main power supply is ...



A single phase distribution box controls and protects home or office circuits. Learn its definition, main parts, and how it ensures electrical safety.



Single/Three-phase system acting up? Learn to troubleshoot voltage imbalances, overheating, and more. Get expert solutions & fix your electrical ...



Master the safest and most efficient circuit breaker wiring configurations. Learn about single-phase vs. three-phase setups, safety standards, and future-proof electrical planning.

## Contact Us

For more information, pricing, or custom energy solutions, please contact us:

Website: <https://www.gdroofing.co.za>

Email: [sales@gdroofing.co.za](mailto:sales@gdroofing.co.za)

Phone: +27 72 418 9365

Address: 22 Electron Avenue, Isando, Johannesburg, 1600, South Africa

This document is for informational purposes only. Specifications subject to change without notice.

