

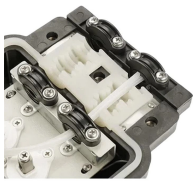
Size of large-span bridge structures in Papua New Guinea



Size of large-span bridge structures in Papua New Guinea



Supplied in a variety of spans and widths, and configured from pre-engineered components for ease of installation. A new and robust ...



We are pleased to submit to you the basic design study report on the Project for construction of Bridges on Bougainville Coastal Trunk Road in the Independent State of Papua New Guinea.



A case study in Papua New Guinea featuring 4 bridges of lengths between 66 to 285 meters in length fabricated by ESC Steel Structures.



Some may argue that the Hegigio span was not a true bridge since it was not built for people but this third of a mile long web of wire and steel was a substantial structure capable of ...



The Department gratefully acknowledges Austroads for permitting the use of their design manuals/guidelines in this document and deviations have been made to suit local Papua New ...



This specification has been adapted from the Papua New Guinea Department of Works "Specification for Road and Bridge Works", August 1995, and incorporates sections from the draft Vanuatu Transport ...



The majority of the bridges of Papua New Guinea (PNG) have exceeded their design lives and are at risk of collapse, knowing that the country is tectonically active.



You encounter unique challenges when installing a large span steel truss bridge for Papua New Guinea. You must prioritize adaptable methods to suit remote environments.



Supplied in a variety of spans and widths, and configured from pre-engineered components for ease of installation. A new and robust solution in Papua New Guinea to withstand higher tides. [Learn more.](#)



The requirements of most world codes are aimed at higherise Buildings which do not constitutes major parton of Paplia New Guinea construction.

Contact Us

For more information, pricing, or custom energy solutions, please contact us:

Website: <https://www.gdroofing.co.za>

Email: sales@gdroofing.co.za

Phone: +27 72 418 9365

Address: 22 Electron Avenue, Isando, Johannesburg, 1600, South Africa

This document is for informational purposes only. Specifications subject to change without notice.

