

## Slovenia Access Switch OSFP



## Slovenia Access Switch OSFP



When discussing memory sizes, MB and MBytes are used in this document to mean size in MegaBytes. The use of Mb or Mbits (small b) indicates size in MegaBits. IB is used in this ...



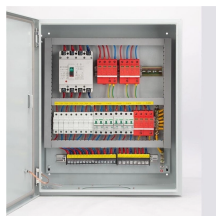
OSPF for Routed Access refers to a network design in which OSPF is implemented at the access layer of a network using Layer 3 switches. In a routed access design, the Layer 2 functionality, such as ...



A Type 2 OSFP module provides maximum of 16mm additional length in front than a Type 1 module, and a Type 3 OSFP module provides maximum of 3.6mm additional height in the front than a Type 2 ...



Follow these steps and example to configure OSPF at the organization and site level.



Explore the OSFP transceiver: a high-speed, future-ready solution for data centers. Learn its advantages in bandwidth, thermal performance, and signal integrity.



Solved: Hello, So i'm doing an assignment and i'm interested in doing a routing setup with OSPF on my Layer 3 switches. I would want to have my layer 3 switches route all the traffic that's ...



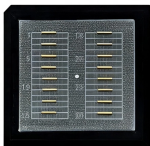
All three series share the same robust OSFP footprint, with 60 contacts per port and a 0.6 mm pitch form factor optimized for signal integrity, thermal management, and multi-lane pluggable ...



To activate OSPF on a network, you must enable the OSPF protocol on one or more interfaces on each device within the network on which traffic is to travel.



The Octal Small Form Factor Pluggable (OSFP) Connector System provides single- or dual-port, 8- or 16-lane I/O connectivity with DAC, AOC, ACC and optical modules for high-density switch applications.



The following section details how OSPF is configured and works on access switches: Each VLAN on the access switch will have an SVI configured with an IP address, acting as the ...

## Contact Us

For more information, pricing, or custom energy solutions, please contact us:

Website: <https://www.gdroofing.co.za>

Email: [sales@gdroofing.co.za](mailto:sales@gdroofing.co.za)

Phone: +27 72 418 9365

Address: 22 Electron Avenue, Isando, Johannesburg, 1600, South Africa

This document is for informational purposes only. Specifications subject to change without notice.

