

## Smart City Telecom Chassis Dimensions



### Overview

060" thick 5052 alloy aluminum and measures 12. The PacStar® Smart Chassis transforms individual network modules into complete modular communications solutions. This modular. Rugged 22. A high-strength outdoor distribution box perfect for telecom and power electronics in extreme environments. Cable support CAT 5e (10/100Mbps) All modules support LLF feature. LLF Mode Fiber > TX: Fiber port link down, the TX port will be forced down. The manufacturers drawing an he spacing between the rack mounting rails and the overall dimensions of the rack. In general, ETSI standard racks and cabinets shall be and capable of supporting an additional dynamic. The chassis made of 0.

## Smart City Telecom Chassis Dimensions



To meet the demands of federal agencies operating in austere environments, Haivision partnered with Curtiss-Wright to develop a solution that delivers real-time intelligence, secure communications, and ...



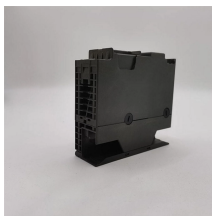
Supporting both PacStar 200-Series and 400-Series modules in a single, compact platform, the chassis is available in 8-slot and 4-slot configurations to scale from small, mobile deployments to large, multi ...



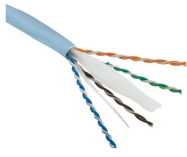
Typically, Racks and Cabinets will house FTTx related telecommunications equipment belonging to and operated by SEC however, the same standards will apply to any racks that may be provided for the ...



Your Benefits: A comprehensive communications solution for CCTV cameras, WiFi access points, sensors, payment kiosks, etc. Integrated LoRaWAN gateway Ruggedized devices for outdoor ...



Dimensions: 17.4"(L) x 10.5"(W) x 5.25"(H)  
442mm (W) x 267mm (H) x 134mm (D) 3 Rack Units



Smart Chassis transforms individual network modules into complete modular communications solutions. The PacStar Smart Chassis modules can be operated in PacStar Smart Chassis, removed in groups ...



With an internal workspace of 552×350mm, this aluminum enclosure is ideal for housing medium-sized power converters, decentralized control units, and multi-port network switches. The 22.5kg mass ...



The assembly highlighted here is a chassis that is used in the telecommunications industry. The chassis made of 0.060" thick 5052 alloy aluminum and measures 12.691" in length, 7.5" in width, and 1.5" in ...



SMART-T makes it possible for units to reliably and securely extend the range of their network in such a manner that communications cannot be jammed, detected or intercepted, enabling Soldiers...

## Contact Us

For more information, pricing, or custom energy solutions, please contact us:

Website: <https://www.gdroofing.co.za>

Email: [sales@gdroofing.co.za](mailto:sales@gdroofing.co.za)

Phone: +27 72 418 9365

Address: 22 Electron Avenue, Isando, Johannesburg, 1600, South Africa

This document is for informational purposes only. Specifications subject to change without notice.

