

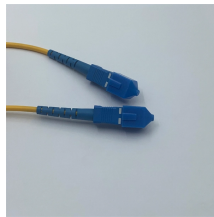
South Asia Industrial Switches DML



South Asia Industrial Switches DML



Diodes " DML3006LFDS and DML3009LDC are high-current, single-channel load switches, capable of driving up to 10 A and 20 A load, respectively. They meet the demands of notebook/tablet ...



Advancements in smart devices, coupled with robust industrialization, are fostering the development of highly efficient and reliable electric switches. These developments are integral to modernizing ...



The Asia Pacific switchgear market size exceeded USD 61.1 billion in 2024 and is likely to register 6.5% CAGR from 2025 to 2034, due to rising urbanization, industrialization, and expanding power ...



24 Port Gigabit Smart Managed Industrial POE Switch Compare



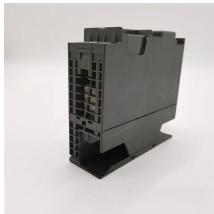
China, Japan, and South Korea are the key markets in Asia Pacific, accounting for a significant share of revenue. Industrial and commercial applications dominate the market, driven by ...



Asia industrial Company founded in 1995, is mainly engaged in the production and distribution of various switches, jacks, and other accessories to electronic components. It currently has over 200 ...



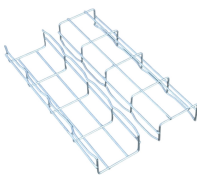
Our industrial switch lineup for Asia (Singapore) includes durable basic, limit, and safety switches, engineered for reliable operation in challenging industrial conditions.



With industrialization on the rise across the region, the market for industrial switches in Asia Pacific is expected to continue expanding in both developed and developing nations.



S.T. Industrial (Asia) Limited specializes in R& D, manufacturing and sales of precise switches, offering high-quality products and professional services.



Discover how Southeast Asian inductive switches manufacturers can leverage regional advantages and strategic differentiation to thrive in the global market's price-sensitive yet high-growth environment.

Contact Us

For more information, pricing, or custom energy solutions, please contact us:

Website: <https://www.gdroofing.co.za>

Email: sales@gdroofing.co.za

Phone: +27 72 418 9365

Address: 22 Electron Avenue, Isando, Johannesburg, 1600, South Africa

This document is for informational purposes only. Specifications subject to change without notice.

