

Spacing between air switches in distribution boxes



Spacing between air switches in distribution boxes



When considering bus spacings, two dimensions are important. The first is clearance, or the distance through air between conductors of opposite polarity or between an energized conductor and ground. ...



Be sure the space is well drained so that there is no standing water. Cover the equipment and keep it in a clean and dry location with ample air circulation and heat to prevent condensation.



These time-proven, reliable switches provide no-external-arc circuit interruption of overhead distribution feeders and outdoor distribution substations. S& C Alduti-Rupter Switches provide no-external-arc ...



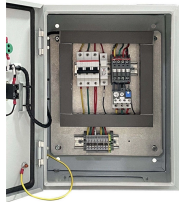
DRESS THE MAJORITY OF CONSTRUCTION ISSUES. IT IS IMPERATIVE TO MAINTAIN STANDARDIZATION, AND THAT COMPLETED JOB ORDERS REFLECT ANY CHANGES ON THE ...



Repeat adjustments if necessary until the switch closes with the overtoggle effect when "CLOSED," and switch blades are fully "OPEN" when the control handle is in the full down position



General Technical Particulars for LT Distribution Boxes : - The L.T. Distribution Boxes should be of the dimensions as per the drawing & details in the table furnished.



It describes various types of substations, illustrates typical layouts, and presents guidelines to be used during detailed design. Information concerning insulation and electrical clearances are reviewed in ...



1, the general switch of the household distribution box can generally choose double-pole 32-63A small air switch or isolation switch. 2□Lighting circuits generally use 10-16A small air switches.



The wiring between the main circuit breaker and each branch circuit breaker in the box generally goes to the left, and the outlet of the distribution box generally goes to the right.



There shall be no above ground obstructions such as fences, shrubs, plants, gas meters, air conditioners, etc., within 13 ft. of the front (600A loop side & 200A tap side) of the unit or within 5 ft. of ...



Arrangement order: The circuit breakers should be arranged from left to right, and the reserved position is generally placed on the right side of the distribution box.



② The reserved space is usually placed on the right side of Low-voltage distribution box. There is a complete space reserved between the first row main air switch and the branch air switch for the ...

Contact Us

For more information, pricing, or custom energy solutions, please contact us:

Website: <https://www.gdroofing.co.za>

Email: sales@gdroofing.co.za

Phone: +27 72 418 9365

Address: 22 Electron Avenue, Isando, Johannesburg, 1600, South Africa

This document is for informational purposes only. Specifications subject to change without notice.

