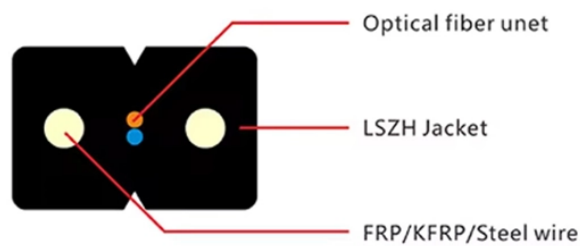
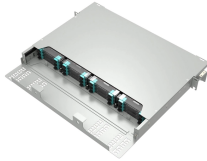


Spanish Integrated Cable Management Frame IP54 Sample



Spanish Integrated Cable Management Frame IP54 Sample



This price is for general public. Price may vary for registered customers. This email address is associated with more than one company. Please select the company you'd like to login to to continue:



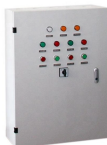
The patented cable entry system KEL-B enables the user to enter, seal (IP54) and provide strain relief for pre-terminated and standard cables. The split grommet matching the cable diameter is placed ...



The patented cable entry system KEL-B enables the user to enter, seal (IP54) and ...



A wide range of cable management accessories is available to ensure perfect management of copper & fiber cables and 19" equipment. Vertical 19" mounting rails can be adjusted freely through the depth, ...



The version with threaded bushings enables the cable entry frame to be screwed onto the housing from the inside out. This protects against vandalism and tampering with the housing from the outside.



The split frame and slit grommets alleviate the need to cut and re-wire pre-terminated cables. Therefore, cable warranties are unaffected. By closing the upper and lower part of the frame a high contact ...



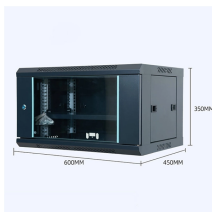
Download QUICK-Cable entry frames, IP54. Available for SOLIDWORKS, Inventor, Creo, CATIA, Solid Edge, autoCAD, Revit and many more CAD software but also as STEP, STL, IGES, STL, DWG, DXF ...



Split multi-range cable grommets, grey, IP54 / UL Type 12 Split cable grommets for diameters 4 - 29 mm. Suitable for KEL cable entry frames and KVT cable glands.



CommScope offers a variety of easy-to-install frames, racks and cabinets specially engineered for network equipment and fiber cable management.



Split multi-range cable grommets, grey, IP54 / UL Type 12 Split cable grommets ...



Suggested cut-out: cable diameter +15-20%. All frame systems come with a rubber gasket. The KTF grommets are suitable for cable diameters up to 65 mm. The adaptable KTF-SCDP cable grommet ...

Contact Us

For more information, pricing, or custom energy solutions, please contact us:

Website: <https://www.gdroofing.co.za>

Email: sales@gdroofing.co.za

Phone: +27 72 418 9365

Address: 22 Electron Avenue, Isando, Johannesburg, 1600, South Africa

This document is for informational purposes only. Specifications subject to change without notice.

