

## Specifications for wall-mounted cable trays



## Specifications for wall-mounted cable trays



Hubbell's NEXTFRAME® Ladder Tray is the effective and widely used cable runway that supports and delivers bundles of cable between cabinets, racks, and closets, along walls, and suspended from ...



Everything you need to build a cable management system, including Cablofil wire mesh cable tray, ladder cable tray, prefab assemblies for brand circuit wiring, fasteners and accessories.



The 501 Series Wall Mount Cable Tray directly attaches to walls without brackets using integrated mounting rings located along the center spine of the tray.



This comprehensive guide walks through the essential factors that determine proper cable tray sizing, explains how to interpret dimensional specifications, and provides practical insights into ...



The mesh cable trays are suitable for the installation of power cables and cables in various areas of application. The grid spacings mean that cables can be inserted and run out in various directions.



The straight sections and fittings feature perforations along the side rail to allow you to quickly and easily alter the system. Plus, add-rung-kits allow you to add rung at any location along the length of the tray ...



The drawings which constitute a part of these specifications indicate the general route of the cable tray systems. Data presented on these drawings is as accurate as preliminary surveys and planning can ...



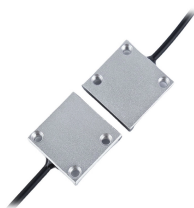
Build a cable management system with Cablofil wire mesh cable tray, ladder cable tray, prefab assemblies for branch circuit wiring, fasteners, and accessories.



Cable Tray Technical Guide A practical guide to product selection and installation This guide for engineers and installers has been developed by ABB as a practical reference regarding cable tray ...



Our cable tray design considerations guide details key factors to consider when designing cable tray systems for industrial and commercial applications. Browse or download the cable tray catalog for ...



NEMA VE 1-2017 Specifies requirements for metal cable trays and associated fittings designed for use in accordance with the rules of Canadian Electrical Code, Part I and the National Electrical Code®

## Contact Us

For more information, pricing, or custom energy solutions, please contact us:

Website: <https://www.gdroofing.co.za>

Email: [sales@gdroofing.co.za](mailto:sales@gdroofing.co.za)

Phone: +27 72 418 9365

Address: 22 Electron Avenue, Isando, Johannesburg, 1600, South Africa

This document is for informational purposes only. Specifications subject to change without notice.

