

Specifications of Ali Cable Trays



Specifications of Ali Cable Trays



The document provides detailed specifications for aluminum cable trays, including features, accessories, material compliance, and load ratings. It outlines various applications in commercial and industrial ...



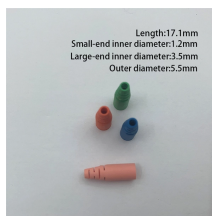
All calculations and data are based on 36 in. wide cable trays with rungs spaced on 12 in. centers with tray supported as simple spans with deflection measured at the midpoint.



Our wind certification report provides you with list of acceptable B-Line series cable tray supports, fittings and covers based off of the environmental conditions, cable loading, and type of cable tray in your ...



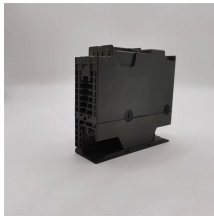
Product specification guides Technical data sheets White papers Cable tray systems full catalog Browse or download the Cable Tray catalog for more information on ...



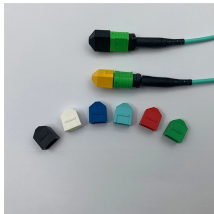
Description: Bridgeport Fittings ALI-WMCT is an Aluminum and Copper Lay-in Lug that was designed for use with Wire Mesh Cable Tray. Lug conductor range: Aluminum or Copper #4-#14 AWG



Cable tray length is selected based on the load to be supported, the distance between the supports (also referred to as the span), and handling and installation constraints.



The work covered under this section consists of the furnishing of all necessary labor, supervision, materials, equipment, tests and services to install complete cable tray systems as shown on the ...



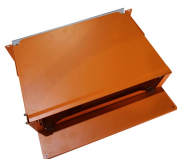
The aluminum cable tray is a lightweight, durable, and cost-effective solution used for organizing and safely carrying electrical and data cables. With easy installation and strong corrosion resistance, it is ...



These complete, custom cable tray systems reduce the costly and labor-intensive modifications required to assemble standard cable tray straight sections, splice plates and accessories to fit your tank or ...



NEMA VE 1-2017 Specifies requirements for metal cable trays and associated fittings designed for use in accordance with the rules of Canadian Electrical Code, Part I and the National Electrical Code®



All Hubbell aluminum cable trays are classified by Underwriters Laboratories as suitable for use as equipment grounding conductors per NEC 392 and are certified by UL to meet all requirements of ...



Description: This product category covers metal cable trays and metal cable tray systems intended for field assembly and for use in accordance with Article 392 of NFPA 70.

Contact Us

For more information, pricing, or custom energy solutions, please contact us:

Website: <https://www.gdroofing.co.za>

Email: sales@gdroofing.co.za

Phone: +27 72 418 9365

Address: 22 Electron Avenue, Isando, Johannesburg, 1600, South Africa

This document is for informational purposes only. Specifications subject to change without notice.

