

Specifications of Split Fiber Optic Cable Sheaths



Specifications of Split Fiber Optic Cable Sheaths



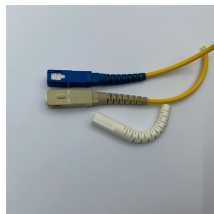
Cable assemblies include a pull sheath for ease of deployment in the field. Each assembly is fully tested and includes a certification test report.



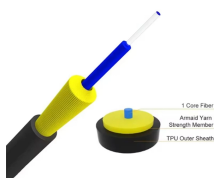
Fiber optic cable splitter is an important passive device in the optical fiber link, We supply 1x2,1x4,1x8,1x16,1x32 cassette type plc splitter.



This guide demystifies fiber optic splitters, explaining their design, operating principles, types, key specifications, and real-world applications. Whether you're a network engineer designing a ...



Individual customer connections are achieved using OptiTap® ports. The closure can accommodate up to 16 ports. The terminal consists of two hinged half-shells, sealed with a reusable silicone ring. All ...



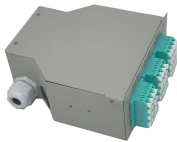
Explore reliable optical fiber splice closures for network deployment. Our closures prioritize reliability, installability, and flexibility



Since building systems may require many types of cables, both fiber and copper, these cables should be separated to protect the fiber cables from damage and all cables marked properly.



This information printed here is correct at the time of publication and as per testing of the components under standard, specified and controlled environment. Specifications are subject to change without ...



This best practices document is a step-by-step guide for end and midspan access of loose tube optical cable, including sheath removal, core preparation, and fiber preparation.



1.1 The cable shall meet all requirements stated in this specification. The cable is designed and tested to meet the applicable requirements of ANSI/ICEA Standard for Fiber Optic Outside Plant ...



Understand the differences between LSZH, HDPE, and LDPE cable sheaths and where each is used in FTTH.



The following icons are used throughout this catalogue to represent the fibre optic cable specification, features and value added services that FibreFab can offer:

Contact Us

For more information, pricing, or custom energy solutions, please contact us:

Website: <https://www.gdroofing.co.za>

Email: sales@gdroofing.co.za

Phone: +27 72 418 9365

Address: 22 Electron Avenue, Isando, Johannesburg, 1600, South Africa

This document is for informational purposes only. Specifications subject to change without notice.

