

Specifications of Swiss Cable Trays



Specifications of Swiss Cable Trays



Our cable tray design considerations guide details key factors to consider when designing cable tray systems for industrial and commercial applications. Browse or download the cable tray catalog for ...



NEMA VE 1-2017 Specifies requirements for metal cable trays and associated fittings designed for use in accordance with the rules of Canadian Electrical Code, Part I and the National Electrical Code®



Cablofil Wiremesh Cable Tray concept based upon performance, safety and economy: three qualities which make Cablofil Wiremesh Cable Tray system preferred by installers. Cablofil ...



Cablofil is the global gold standard for total cable management. Explore the one-stop shop for innovative, fast, and dependable cable management systems including wire mesh tray, ladder cable ...



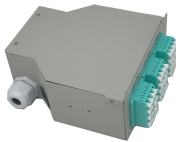
The drawings which constitute a part of these specifications indicate the general route of the cable tray systems. Data presented on these drawings is as accurate as preliminary surveys and planning can ...



Cable ladder is a more reliable, less expensive solution for supporting cable, which is easier to maintain, proves more adaptable to changing needs, and is more suitable for harsh and corrosive environments.



Our wind certification report provides you with list of acceptable B-Line series cable tray supports, fittings and covers based off of the environmental conditions, cable loading, and type of cable tray in your ...



The Ladder Tray features light, rugged, tubular steel construction. It is designed for mechanical support and strain relief in long runs of cable and creates a smooth gradual bend for cable. Rail and stringer ...



Four different mesh cable tray types are available, depending on the requirements, area of application and cable quantity. The innovative Magic connection system of the GRM and G-GRM mesh cable ...



Cable tray length is selected based on the load to be supported, the distance between the supports (also referred to as the span), and handling and installation constraints.



Designed to integrate with the existing Swifts cable tray system, Swiftclip can be used with medium (MRF and heavy duty (SRF) in 50 to 300mm widths. The entire system offers excellent earth ...

Contact Us

For more information, pricing, or custom energy solutions, please contact us:

Website: <https://www.gdroofing.co.za>

Email: sales@gdroofing.co.za

Phone: +27 72 418 9365

Address: 22 Electron Avenue, Isando, Johannesburg, 1600, South Africa

This document is for informational purposes only. Specifications subject to change without notice.

