

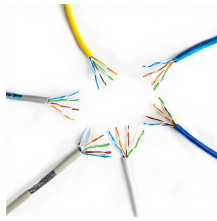
## Specifications of a 2-Circuit Distribution Box



## Specifications of a 2-Circuit Distribution Box



Plastic Electrical Box, also known as a consumer control unit or electricity control unit. It is a device that is a type of distribution board that helps in protecting cables from overload and then damage or ...



This 2-Space 2-Circuit type EQ Load Center features copper bus bars for ...



This specification guide provides system designers, electrical engineers, and procurement professionals with the technical criteria needed to select compliant outdoor electrical ...



Easy Installation of outgoing The design of the pan assembly facilitates the installation of outgoing devices. Availability of mixing Mixing two different types of outgoing devices can be provided in ...



The short-circuit rating of the assembled panelboard is the rating of the lowest fully rated main or branch device or the rating of an approved series rated combination.



Designed by BAHRA, the Load Centers (LC) use the best selection of materials, cutting edge technology and class leading features to ensure safety, durability and performance. The remarkable Load Center ...



This 2-Space 2-Circuit type EQ Load Center features copper bus bars for increased conductivity. Includes a factory installed 200 Amp main breaker for overload and short-circuit protection. For use ...



Get free shipping on qualified 2-Circuit Breaker Boxes products or Buy Online Pick Up in Store today in the Electrical Department.



This guide provides information on how to select the appropriate Distribution Box for Electric project. If you have any questions about distribution boxes, please feel free to contact us.



The outdoor distribution junction box and enclosure for din rail are suitable for indoor electrical, communication, control panels, terminal boxes Applicable Places: Our 2 way electrical panel DIN ...



Eaton's Pow-R-Line Series panelboards provide electric power distribution with integrated breakers, metering and surge protection. Designed to meet UL67 standards for use in data centers, industrial, ...

## Contact Us

For more information, pricing, or custom energy solutions, please contact us:

Website: <https://www.gdroofing.co.za>

Email: [sales@gdroofing.co.za](mailto:sales@gdroofing.co.za)

Phone: +27 72 418 9365

Address: 22 Electron Avenue, Isando, Johannesburg, 1600, South Africa

This document is for informational purposes only. Specifications subject to change without notice.

