

Spectrometer Chromatography



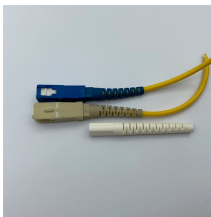
Spectrometer Chromatography



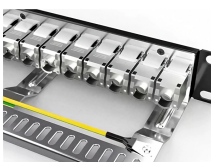
GC/MS (gas chromatography coupled with mass spectrometry) is also another useful method which can determine the components of a given mixture. When the detector is showing a peak, some of what is ...



This gas chromatography mass spectrometry (GC-MS) overview explains how this technology is used to analyze trace level and unknown compounds.



Gas chromatography-mass spectrometry (GC-MS) is an analytical method that combines the features of gas-chromatography and mass spectrometry to identify different substances within a test sample.



Chromatography and spectrometry are often used together because they provide complementary capabilities that enhance the analysis of complex mixtures. To delve into how each ...



Principles behind a range of analytical methods, including IR, UV-vis and NMR spectroscopy, chromatography and mass spectrometry techniques. Each resource has clear explanations and ...



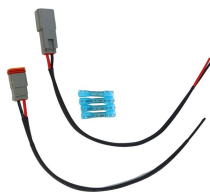
After chromatographic separation, the sample enters the mass spectrometer in the form of pure substances, thereby avoiding complex mixtures from entering the ion source at the same time, which ...



This action is not available.



Learn about the basics of liquid chromatography mass spectrometry. With a focus on the fundamentals of LC/MS, this primer explains the basic principle of operation, theory and technique for the liquid ...



Mass Spectrometry is an analytical technique that forms ions from atoms or molecules and measures their mass-to-charge (m/z) ratios in gas phase. Mass Spectrometry can provide information about ...



Spectroscopy vs. Chromatography: What's the Difference? Spectroscopy is the study of the interaction between matter and electromagnetic radiation, while chromatography is a method for ...

Contact Us

For more information, pricing, or custom energy solutions, please contact us:

Website: <https://www.gdroofing.co.za>

Email: sales@gdroofing.co.za

Phone: +27 72 418 9365

Address: 22 Electron Avenue, Isando, Johannesburg, 1600, South Africa

This document is for informational purposes only. Specifications subject to change without notice.

