

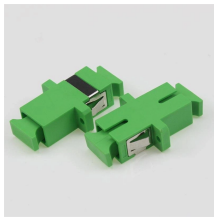
Sri Lankan manufacturer ODF patch panel 6 cores



Sri Lankan manufacturer ODF patch panel 6 cores



Organize and protect your fiber terminations with high-quality fiber patch panels from Eastlink.lk.



This rack-mounted fiber patch panel (ODF) offers exceptional durability, made from 1.2mm cold-rolled steel. It features a smooth slide-type mechanism for easy access to connections and removable ...



E-Photics Slide-out Rack Mount Patch Panel provides maximum port number of 6, 12, 18 or 24 ports. It is suitable for the use in telecommunication network, central office optical cable system and premise ...



Shop high-quality 6 port ODF fiber optic products from reliable suppliers. Enjoy durable, efficient, and cost-effective solutions for your FTTH needs.



PATCH PANNEL - LANSAN 24 PORT CAT5E (LHD5E24) In Stock Rs. 8,250.00 or 3 X Rs. 3,080.00 with * T& C Apply



We are the sole distributor and Mole for XGXC Telecommunication Test and Measurement Equipment Manufacturing Company in China in Sri Lanka.



Din Rail Patch Panel with 6 SC Duplex adapter is metal box special designed to be snapped on din rail, DIN RAIL fiber box accepts one modular panel making it ...



Din Rail Patch Panel with 6 SC Duplex adapter is metal box special designed to be snapped on din rail, DIN RAIL fiber box accepts one modular panel making it ideal for smaller fibre count applications of ...



Streamline your fiber connectivity with our premium Fiber Optic Patch Panels and ODF systems. Designed for reliability and ease of use, our rack-mount and wall-mount solutions provide the perfect ...



Organize and streamline your network infrastructure with our comprehensive range of patch panels. From small office setups to large-scale data centers, we provide reliable solutions for managing and ...



With easy-to-use features and sturdy construction, our Fiber Optic Patch Panels streamline installations and ensure optimal performance for your network. Simplify your fiber cable management with our ...

Contact Us

For more information, pricing, or custom energy solutions, please contact us:

Website: <https://www.gdroofing.co.za>

Email: sales@gdroofing.co.za

Phone: +27 72 418 9365

Address: 22 Electron Avenue, Isando, Johannesburg, 1600, South Africa

This document is for informational purposes only. Specifications subject to change without notice.

