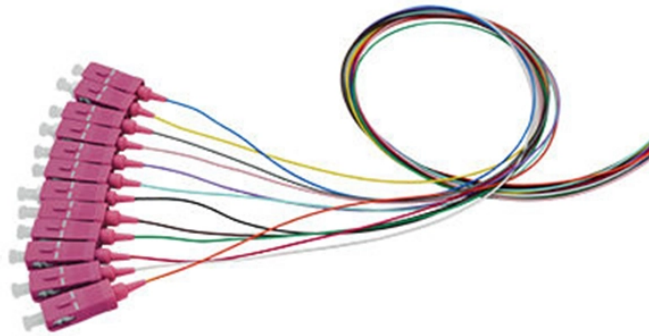


## Standard Configuration of Factory Level 2 Distribution Box



## Standard Configuration of Factory Level 2 Distribution Box



The standard defines 4 partitioning levels (forms) to ensure the protection of persons against direct contact. The form is a solution provided to an IP protection requirement and a client ...



The test shall be carried out according to IEC 60068-2-2 Test Bb, at a temperature of 70 °C, with natural air circulation, for a duration of 168 h (7 days) and with a recovery of 96 h (4 days).



This grade-level box has an anti-flotation collar and a sealed and securable lid for order control and safety. The sampling container has inlet and outlet seals with 4" separation to allow uncontaminated ...



The new standard clearly regulates the responsibility for a distribution board placed on the market. It distinguishes between the original manufacturer (system manufacturer) and the manufacturer of the ...



This article will detail the practical strategies for optimizing the layout of cable distribution boxes in industrial scenarios, integrating the advantages of Chuanli products and industry best ...



When factory tested in accordance with ASTM E90, provide assemblies that are no less than STC 50 when STC 45 perimeter is required and no less than STC 55 when STC 50 perimeter is required.



The combination mentioned in selection chart are standard, generally used for projects and domestic use. We can also design & supply distribution boards to any non standard requirements.



From residential 100-amp panels to massive 600 amp main distribution panels in commercial facilities, this comprehensive guide will help you understand distribution board types, ...



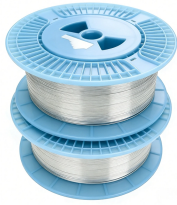
Designing a power distribution board that complies with IEC Standards is essential for safety, reliability, and operational efficiency. Whether you are designing for a factory or a solar ...



Access specifications, installation instructions, and manuals, organized by product family.



Quick of the shelf stock or fast turnaround on standard factory assembled boards. Assembled option means installers have the benefit of all components already fitted and ready to install the board. ...



Type 1 Enclosures constructed for indoor use to provide a degree of protection to personnel against access to hazardous parts and to provide a degree of protection of the equipment inside the ...



The ABB-MNS® distribution board and power cabinet are of a welded structure. The product comes in a good variety of shapes, and is highly versatile, structurally innovative, and mechanically rigid. Its ...

## Contact Us

For more information, pricing, or custom energy solutions, please contact us:

Website: <https://www.gdroofing.co.za>

Email: [sales@gdroofing.co.za](mailto:sales@gdroofing.co.za)

Phone: +27 72 418 9365

Address: 22 Electron Avenue, Isando, Johannesburg, 1600, South Africa

This document is for informational purposes only. Specifications subject to change without notice.

