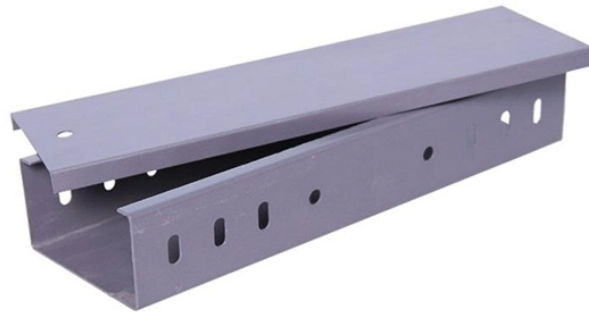


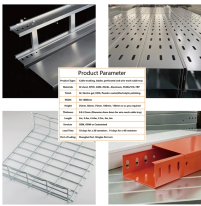
# **Standard Dimensions of Electrical Distribution Boxes at Libyan Construction Sites**



## Standard Dimensions of Electrical Distribution Boxes at Libyan Cons



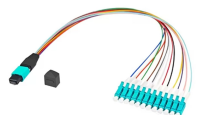
This document provides guidelines for managing construction standards at General Electricity Company of Libya (GECOL). It outlines the organizational structure for developing and ...



The document ensures switchgear assemblies meet operational, insulation, impulse withstand voltage and short-circuit ratings for use in Libyan distribution stations.



The main objectives of this paper is to provide a contemporary look at the current state of the Libyan power grid, and to discuss as well, the requirements that should be considered for this ...



Electrical enclosure sizes are not universal, but most manufacturers follow common size families. This guide explains typical wall-mount and floor-standing dimensions, how to read catalog ...



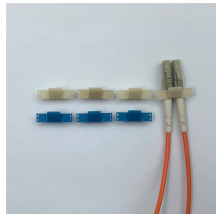
Find your construction site electrical enclosure easily amongst the 25 products from the leading brands (HLC, WALTHER WERKE, DIGITAL ELECTRIC, ...) on DirectIndustry, the industry specialist for your ...



The document outlines the Guideline for Design Standards (GDS) for the General Electricity Company of Libya, detailing its scope, definitions, duties of various departments, and ...



This document provides guidelines for managing construction standards at General Electricity Company of Libya (GECOL). It outlines the ...



Our products: The switchboards assembled in our company with all equipment according to the specifications mentioned, satisfy IEC standard, GECOL specification and Schneider Electric ...



Where GECOL is to adopt the new distribution system, the proposed design shall be approved by the GECOL (allowing sufficient time for any revisions) before commencing on-site construction.



This guide explores control panels, electrical boxes, breaker panels, bus bars, junction boxes, and custom enclosures to help you understand their sizes, types, and common applications.



ENERGY METALBOX range consists of construction site distribution boards in metal cabinets with technopolymer socket-outlets. The steel sheet enclosure is fitted with double lock doors to prevent ...



The document ensures switchgear assemblies meet operational, insulation, impulse withstand voltage and short-circuit ratings for use in Libyan ...

## Contact Us

For more information, pricing, or custom energy solutions, please contact us:

Website: <https://www.gdroofing.co.za>

Email: [sales@gdroofing.co.za](mailto:sales@gdroofing.co.za)

Phone: +27 72 418 9365

Address: 22 Electron Avenue, Isando, Johannesburg, 1600, South Africa

This document is for informational purposes only. Specifications subject to change without notice.

