

# Standard Dimensions of Explosion-proof Distribution Boxes in Grenada



## Overview

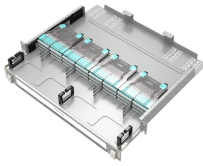
Customizable configuration of operators, cable entry quantities and cable gland types as per specification. The enclosure series EJB forms the optimal basis for the application-specific configuration of terminal boxes, control stations as well as control and distribution panels. Distribution Boxes HRMD97 Series Explosion-proof Distribution Panels Catalogue number logic HRMD 97 5/50 Explosion protection to -CENELEC -IEC -NEC Can be used in Zone 1 and Zone 2 Zone 21 and Zone 22 Class I, Zone 1 and Zone 2 Class I, Division 1, Groups B, C, D Flameproof enclosure (Ex db, Ex db. Distribution Boxes HRMD91 Series Explosion-proof Distribution Panels Explosion protection to -CENELEC -IEC -NEC Can be used in Zone 1 and Zone 2 Zone 21 and Zone 22 Class I, Zone 1 and Zone 2 Class I, Division 1, Groups B, C, D Flameproof enclosure (Ex d IIB+H2), which can be used as feed. These are available in a range of materials including Stainless Steel, GRP & Sheet Steel from IP42 (Indoor) to IP 66 (Outdoor) Applications. Extol International are the leading suppliers of Control Panels & Distribution Boards for hazardous areas and explosive atmospheres – a comprehensive range of. Warom Explosion proof Distribution Box (Ex d IIB+H2) in 316 stainless steel. Available with a wide

range of built in components. Enclosure: 316 stainless steel. Equipped with a specialised hinge structure which can prevent damage to the flameproof joints when opening and closing the box; greatly. 1. HRMD91 terminal boxes have various different terminal arrangement methods. 1. MCB (Miniature Circuit Breaker) or MCCB (Moulded Case Circuit Breaker), AC contactor, thermal overload relay, etc.

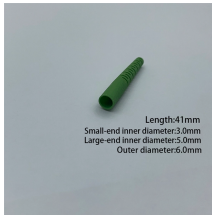
## Standard Dimensions of Explosion-proof Distribution Boxes in Gren



The enclosures can be combined into large distribution system on standard-ised wall mounting or free-standing frameworks. The frameworks come in standardized sizes to accommodate the enclosure ...



Polyester distribution boxes are used in hazardous explosive dust areas. They provide safe protection from extreme environments and chemicals due to their explosion-proof construction. The boxes have ...



Polyester distribution boxes have been of great advantage in many industrial plants. They offer safe protection even when they are exposed to extreme environmental conditions, aggressive chemical ...



These are available in a range of materials including Stainless Steel, GRP & Sheet Steel from IP42 (Indoor) to IP 66 (Outdoor) Applications.



The enclosures are certified Ex d IIB+H2 and Ex tb as well as "explosion-proof". They are available in many sizes, a wide range of operating elements and monitoring functions can be integrated. They ...



Equipped with specialized hinge structure, which can prevent the flameproof joints from damage when opening and closing the box, and greatly prolong the service life of box.



Equipped with specialized hinge structure, which can prevent the flameproof joints from damage when opening and closing the box, and greatly prolong the service life of box. The boxes can be combined ...



Our explosion protection Ex enclosures and equipment are comprehensive and widely configurable. Reliable in use and convenient to install, their overall quality provides cost efficiency, and most of all, ...



The boxes can be combined and installed freely to save space and meet the requirements of various distribution systems. Client requirements incorporated on request.

## Contact Us

For more information, pricing, or custom energy solutions, please contact us:

Website: <https://www.gdroofing.co.za>

Email: [sales@gdroofing.co.za](mailto:sales@gdroofing.co.za)

Phone: +27 72 418 9365

Address: 22 Electron Avenue, Isando, Johannesburg, 1600, South Africa

This document is for informational purposes only. Specifications subject to change without notice.

