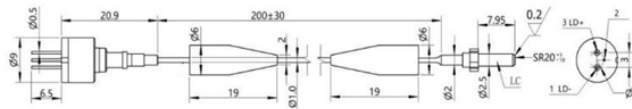


## Standard Household Electrical Distribution Box Diagram

Dimensions:



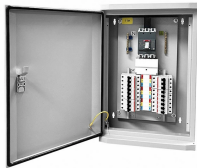
## Standard Household Electrical Distribution Box Diagram



Clear, easy-to-read wiring diagrams and instructions for household circuit breakers including: a breaker panel box, 15amp, 20amp, 30amp, 50amp, and gfcı breakers.



The following tutorial explains how to wire split-phase (240V single-phase) circuit breakers and load points in a residential distribution panel. Split-phase or 240V single-phase circuits are typically ...



Understanding the electrical service diagram is essential for homeowners and electricians alike. It provides a visual representation of the electrical distribution system in a residential building, helping ...



A breaker box wiring diagram is a detailed illustration that shows the electrical connections and components within a breaker box. This diagram is essential for understanding how the electrical ...



Whether you are considering a backup power system, want to add another electric circuit, or are going to install a new appliance, it is important to understand the home's electrical wiring basics and ...



To ensure that your electrical system is properly balanced and functioning safely, you must understand how a house distribution board works. This article provides an overview of the ...



Explore a comprehensive guide to residential electric meter box wiring diagrams, offering clear instructions for safe and efficient installation.



To give you an overview, we'll take a look at the components of a typical house distribution board wiring diagram. The distribution board wiring diagram typically consists of two main parts; the power supply ...



Even if you're an experienced homeowner or contractor, the complexity of wiring a home's electrical distribution board can be daunting. That's why having a clear, detailed diagram of ...



A detailed diagram of a breaker box, showing its components and how they function to protect electrical systems from overloads and faults.

## Contact Us

For more information, pricing, or custom energy solutions, please contact us:

Website: <https://www.gdroofing.co.za>

Email: [sales@gdroofing.co.za](mailto:sales@gdroofing.co.za)

Phone: +27 72 418 9365

Address: 22 Electron Avenue, Isando, Johannesburg, 1600, South Africa

This document is for informational purposes only. Specifications subject to change without notice.

