

## Standard Requirements for Circuit Protection of Distribution Boxes



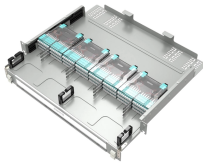
## Standard Requirements for Circuit Protection of Distribution Boxes



Each method provides short-circuit protection, motor overload protection, and the ability to start and stop the motor. Some additionally provide a means to disconnect the branch circuit for maintenance and ...



Conductors entering boxes, cabinets, or fittings shall be protected from abrasion, and openings through which conductors enter shall be effectively closed. Unused openings in cabinets, boxes, and fittings ...



... Is the value of the uninfluenced short-circuit current specified by the ASSEMBLY manufacturer which the circuit protected by a short-circuit protection device (SCPD) can withstand during the total turn-of ...



The latest NEC updates prioritize adaptive solutions for modern energy demands. With homes now packing solar arrays, EV chargers, and smart-home systems, distribution boxes work harder than ...



(1) Requirements applicable to all installations. The following requirements apply to all electrical installations and utilization equipment, regardless of when they were designed or installed: (2) ...



Learn how to install a distribution box safely and correctly. Covers wiring, placement, standards, and expert tips for a compliant setup.



You need to understand the main standards and codes that guide the safe design and use of low voltage distribution boxes. These rules help you meet ...



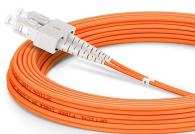
Circuit protection includes protection from equipment overload conditions, undervoltage and overvoltage conditions, ground faults, and short circuits. Although mandated by code for any electrical ...



You need to understand the main standards and codes that guide the safe design and use of low voltage distribution boxes. These rules help you meet legal requirements and keep your ...



Abstract: To protect personnel, equipment, and maintain continuity of service for an electrical system, protection or fault interrupting devices are required. Adequate system designs allow for the system to ...



This document applies to distribution boards that can contain protection devices, control devices, signaling devices alone or a combination of devices (e.g., circuit-breakers, load shedding ...

## Contact Us

For more information, pricing, or custom energy solutions, please contact us:

Website: <https://www.gdroofing.co.za>

Email: [sales@gdroofing.co.za](mailto:sales@gdroofing.co.za)

Phone: +27 72 418 9365

Address: 22 Electron Avenue, Isando, Johannesburg, 1600, South Africa

This document is for informational purposes only. Specifications subject to change without notice.

