

Standard Requirements for Hydropower Distribution Boxes



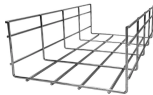
Standard Requirements for Hydropower Distribution Boxes



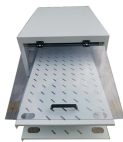
These licenses and exemptions contain requirements, presented as a series of standard and special articles or Appendices, with which licensees and exemptees must comply.



The Primary Service Requirements (formerly the Primary Guide) R5 and associated advisory 2026-019 have been released on 2026-03-13 ES43 B1-03 and B1-15 and have been revised ...



The electrical and mechanical design of each generator must conform to the electrical requirements of the power distribution system and the hydraulic requirements of its specific plant.



This document outlines requirements for customers to follow when designing and constructing structures where Toronto Hydro cables or equipment will be located. It defines key terms and lists references ...



AT RAILWAY CROSSINGS 7.3 7.3 7.6 8.1 * - THE MULTIGROUNDED SYSTEM NEUTRAL H. S THE SAME CLEARANCE AS THE 600V SYSTEM. ** - THE VERTICAL CLEARANCES IN THE ABOVE ...



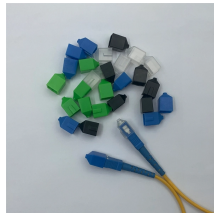
For the purpose of these requirements, Toronto Hydro jurisdiction normally covers the equipment between the point of entry of the supply cables into the Customer's property and the load ...



Toronto Hydro's requirements for customer-owned electrical structures: design, construction, responsibilities, and inspection guidelines.



This standard sets out the technical requirements for the connection of fluctuating loads to the Hydro-Québec distribution system. The requirements are designed to control flicker and rapid ...



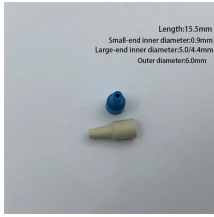
All Customer-Owned Structures housing Toronto Hydro cables and equipment shall have nomenclature that follows Toronto Hydro standards and naming convention. Where required, cable supports, racks, ...



This technical guideline is intended to assist the Customer in understanding the technical requirements for connecting a Customer's Distributed Energy Resource (DER) to Hydro Ottawa ...



Follow electrical and wiring codes for construction, installation, and maintenance.



Wireways can have top, bottom, back, or side entry, and either a wireway or integral pull box. Requirements apply to all service entry assemblies except where noted.

Contact Us

For more information, pricing, or custom energy solutions, please contact us:

Website: <https://www.gdroofing.co.za>

Email: sales@gdroofing.co.za

Phone: +27 72 418 9365

Address: 22 Electron Avenue, Isando, Johannesburg, 1600, South Africa

This document is for informational purposes only. Specifications subject to change without notice.

