

GDR Telecom Site Energy Systems

Standard Switch PoE



Overview

Power sourcing equipment 802.3 refers to Power Sourcing Equipment (PSE), which provides power on the Ethernet cable. This device may be a network switch, in the standard Endpoint PSE (commonly called an endspan device) or a PoE injector, Midspan PSE in the standard, an intermediary device between a switch that does not provide PoE (or one that cannot provide sufficient power). Overview Power over Ethernet (PoE) describes any of several or systems that pass along with data on cabling. This allows a single cable to provide both a data connection. There are several common techniques for transmitting power over Ethernet cabling, defined within the broader standard since 2003. The three t.

Standard Switch PoE



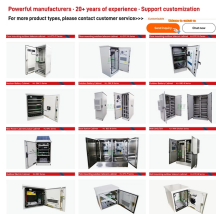
Up to 3% cash back. And how can you tell if a switch or camera is compatible with your infrastructure? This blog provides a clear overview of the ...



The IEEE standard for the base PoE switches is 802.3af, 802.3at for PoE+, and 802.3bt for PoE++. PoE and PoE+ transmit power over two pairs of twisted-pair wires in their cables, while ...



Explore different PoE standards and wattage levels to power devices efficiently. Unlock smarter networking with the right PoE switch today!



And how can you tell if a switch or camera is compatible with your infrastructure? This blog provides a clear overview of the official IEEE PoE standards and explains why manufacturers ...



Explore PoE wattage, IEEE standards, and power sourcing tips. Learn how to select the right PoE setup for reliable, future-ready network performance.



However, there is a frequent question concerning standard and non-standard Power over Ethernet switch. This article will review the differences in the standard and non-standard switch in detail.



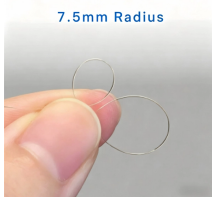
In this lesson, we are going to learn what is Power over Ethernet. What is the difference between the different standards PoE, PoE+, UPOE, and UPOE+? How switches and end devices negotiate PoE ...



What is a Power over Ethernet (PoE) Switch? A PoE switch is a regular Fast Ethernet or Gigabit network switch that has Power over Ethernet functionality integrated.



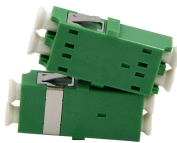
With a multitude of PoE switches available on the market, choosing the right one can be difficult. The original PoE standard was called IEEE 802.3af, and allowed for 15.4 watts of power to be sent from a ...



This device may be a network switch, in the standard Endpoint PSE (commonly called an endspan device) or a PoE injector, Midspan PSE in the standard, an intermediary device between a switch ...



Shop Lantronix enterprise and hardened PoE switches. Deliver data & power over one cable to Wi-Fi access points, security cameras, and IoT devices at the network edge.



Different Types of Poe Standards For Poe SwitchesPoe vs PoE+ vs PoE++ ComparisonQuick Comparisons of The Poe, PoE+, and PoE++Which Poe Switch Is The Best For You?Reasons to Consider When Upgrading Your Poe SwitchAdditional Factors to Consider When Choosing A SwitchBonus Tips: How to Check Poe Standards For Reolink Poe CamerasFAQsConclusionPower over Ethernet (PoE) is a technology that enables the transmission of electric current and data simultaneously over Ethernet cables, eliminating the need for separate power cables. This section will provide a brief overview of the three main PoE standards - Type 1, Type 2, and Type 3 - developed by IEEE and explain the key differences betwe...See more on reolink .sb_doct_txt{color:#4007a2;font-size:11px;line-height:21px;margin-right:3px;vertical-align:super}.b_dark .sb_doct_txt{color:#82c7ff}p >.news_dt{color:#767676}Inscope Data

Contact Us

For more information, pricing, or custom energy solutions, please contact us:

Website: <https://www.gdroofing.co.za>

Email: sales@gdroofing.co.za

Phone: +27 72 418 9365

Address: 22 Electron Avenue, Isando, Johannesburg, 1600, South Africa

This document is for informational purposes only. Specifications subject to change without notice.

