

Standard diagram for jumper wires in distribution boxes



Standard diagram for jumper wires in distribution boxes



These diagrams typically show the termination information for all field (interconnecting) wiring between panels and equipment. Several formats are used for interconnection diagrams.



Figure 1: Picture of terminal blocks with 4-position jumpers configured for power distribution with 8 connection points per node. The configuration shown in Figure 1 provides a good ...



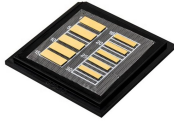
When routing from a lower quadrant of one side of a frame to either quadrant of the opposite side of the frame, route to the lower jumper trough to traverse to the opposite side of the frame and route up to ...



This document provides a list of components in an electrical ...



Specific guidelines when working with jumper wires. This paper presents ten essential rules for effectively attaching and routing jumper wires on circuit board assemblies, ensuring they are secure,



The Distribution Design Catalogue contains the approved standard equipment arrangements for the design of our underground and overhead distribution networks within the Western Power network.



In-span jumper or "C" jumper for OHE is used to connect the catenary wire and the contact wire every 350m for providing a parallel path for the current between the two, so that the load current is ...



Guidelines for selecting, attaching and routing jumper wires on printed circuit boards. Includes strain relief, insulation, soldering and inspection practices to ensure dependable electrical connections.



This paper presents ten essential rules for effectively attaching and routing jumper wires on circuit board assemblies, ensuring they are secure, organized, and compliant with industry ...



2) Drawings showing the general arrangement of a 33/11kV substation with details of equipment layout and dimensions. 3) Standard drawings for busbar gantry and double jumper connections at substations.



Learn how to read and understand a load center wiring diagram, including the different components and connections involved. Find step-by-step instructions and diagrams to help you navigate your load ...

Contact Us

For more information, pricing, or custom energy solutions, please contact us:

Website: <https://www.gdroofing.co.za>

Email: sales@gdroofing.co.za

Phone: +27 72 418 9365

Address: 22 Electron Avenue, Isando, Johannesburg, 1600, South Africa

This document is for informational purposes only. Specifications subject to change without notice.

