

## Standard distribution box enclosure model and specifications



## Standard distribution box enclosure model and specifications



Polycarbonate boxes are available with a smooth surface (one single entry) or with multiple metric cutouts. They are available with a smooth surface or with multiple metric cutouts. Opaque gray or transparent ...



S-TB enclosures are available assembled as custom configured and certified terminal boxes. Options include custom entries, cable glands and plugs with built-in terminals (Ex-e and Ex-i) and other ...



They are particularly suitable for applications under extreme environmental conditions, and they provide reliable protection under heavy loads. The housings are made from 1.4301 (V2 A) or 1.4404 ...



The Vertiv™ NetSure™ External Distribution Box (EDB) offers both DC distribution and fiber distribution in a single convenient enclosure to meet your macro base station needs at 5G cell sites.



By balancing environment, size, material, function and cost, you can get a reliable distribution box enclosure for industrial, commercial, residential or outdoor power applications.



This enclosure box is rated as a Type 1 with one blank end wall and one end wall with knockouts for common conduit sizes. The enclosure dimensions are 20 inch width x 50 inch height x 5.75 inch depth.



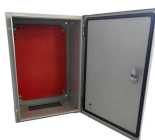
Complete specification guide for outdoor electrical distribution boxes covering NEC Article 312 requirements, NEMA ratings, sizing calculations, and selection criteria for commercial and ...



Discover EKDB10 IP65 waterproof distribution boxes made of durable PC plastic. Available in 4-39 ways, single/double/triple layers, ideal for industrial, commercial, and photovoltaic applications. Meet ...



Our distribution boxes are perfect for industrial environments, catering to automation, robotics, and processing facilities. They provide cost-effective solutions through automated dispensing and ...



This enclosure box is rated as a Type 1 with one blank end wall and one end wall with knockouts for common conduit sizes. The enclosure dimensions are 20 inch ...



Learn about control panels, breaker boxes, junction boxes, and custom enclosures. Explore standard panel sizes, applications, and key differences for residential, commercial, and ...

## Contact Us

For more information, pricing, or custom energy solutions, please contact us:

Website: <https://www.gdroofing.co.za>

Email: [sales@gdroofing.co.za](mailto:sales@gdroofing.co.za)

Phone: +27 72 418 9365

Address: 22 Electron Avenue, Isando, Johannesburg, 1600, South Africa

This document is for informational purposes only. Specifications subject to change without notice.

