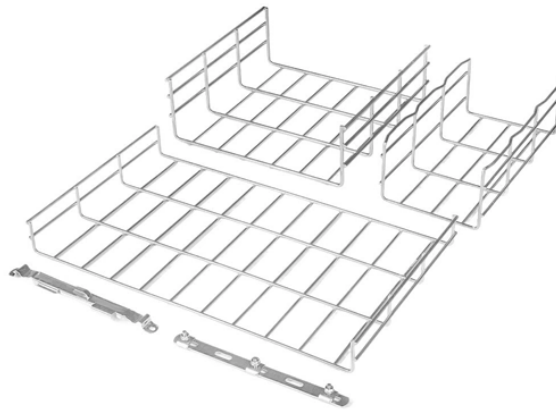


Standard for Placing Bronze Plaques on Distribution Boxes



Overview

Plaques over 24" wide require two posts. Posts are available in heights of 6' or 8'. A 1"-wide post is recommended for plaques up to 250 square inches, 1-1/2" for plaques up to 450 square inches, and 2" for plaques up to 720 square inches. It takes the incoming power and safely distributes it to different circuits throughout your building. Black painted aluminum brackets are attached to the back of the plaque with machine. What materials are available for cast plaques?

Cast plaques are available in two metal materials. Tip: We offer seals and circular plaques and cast aluminum blank plaques. Aluminum cast. JECT TO UPDATE AND MODIFICATION AT ANY TIME. PRINTED COPIES MAY NOT INCLUDE THE MOST UP-TO DATE STANDARDS, REFERENCES, OR REQUIREMENTS. TO EVERY CIRCUMSTANCE OR ELECTRICAL SYSTEM. SRP ENCOURAGES EACH USER TO CONSULT WITH ITS OWN TECHNICAL ADVISOR CONCERNING THE APPLICABILITY OF THESE TANDARDS TO. Please let us know what type of material you plan on attaching the bronze plaque to. An electronic version of the official DFARS is available at www.gov, under Title 48, Chapter 2.

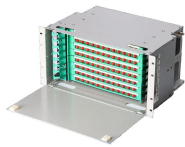
Standard for Placing Bronze Plaques on Distribution Boxes



Insert the machine screws through the bronze plaque and screw on each butterfly. Fold the butterfly assemblies and insert them through the hole until the wings spring open inside the hollow surface.



We had the opportunity to produce two bronze dedication plaques that were used in a plant dedication ceremony that the President of the United States attended. This was a last minute dedication ...



Using the plaque holes as a template, drill holes through the wall large enough to accommodate the butterfly assembly. Insert each machine screw through the plaque and screw on each butterfly.



TITLE BLOCKS ARE USED TO HOLD INFORMATION ABOUT THE BOOK, SECTION, AND STANDARD AND ARE LOCATED AT THE BOTTOM OF THE PAGE. "APPROVAL" REFERS TO ...



Learn how to install a distribution box safely and correctly. Covers wiring, placement, standards, and expert tips for a compliant setup.



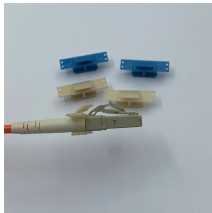
Designing a power distribution board is not just about placing components inside a metal box. It requires a deep understanding of international standards, safety practices, and electrical ...



Gemini recommends that you request this clear coat for plaques that are installed on posts, stakes, fences, gates, benches, or other applications where the back will be exposed to the elements.



Learn about the different mounting methods for bronze plaques. Discover the best options like solid, hollow wall, and wood mounts.



Cast as part of an aluminum or bronze plaque, the post cap mount is designed to fit on 1-1/2", 2" or 3" ID posts. Available on almost any custom plaque, single or double-sided, up to 30" x 30".



Develop a standard family of installation-specific sign designs in accordance with this UFC and any specific requirements defined in the IPS. Integrate new signs with existing signs to provide the most ...



Subclassification labels for all emergency power system equipment as listed for equipment identification labels, and all junction and pull boxes. Fire Alarm equipment per the Fire Alarm specification ...



See Division 01 for submittal procedures. OFPC will provide a half-scale detailed layout of the plaque. Submit four copies of a full size rubbing directly to OFPC for approval prior to casting. OFPC will ...



Cast as part of an aluminum or bronze plaque, the post cap mount is designed to ...

Contact Us

For more information, pricing, or custom energy solutions, please contact us:

Website: <https://www.gdroofing.co.za>

Email: sales@gdroofing.co.za

Phone: +27 72 418 9365

Address: 22 Electron Avenue, Isando, Johannesburg, 1600, South Africa

This document is for informational purposes only. Specifications subject to change without notice.

