

Standard for Reflective Paint on Secondary Distribution Boxes



Standard for Reflective Paint on Secondary Distribution Boxes



This publication, FPL's Electric Service Standards (ESS), is intended to furnish information often required by customers and their agents (builders, architects, engineers, electricians, etc.) to receive ...



DRESS THE MAJORITY OF CONSTRUCTION ISSUES. IT IS IMPERATIVE TO MAINTAIN STANDARDIZATION, AND THAT COMPLETED JOB ORDERS REFLECT ANY CHANGES ON THE ...



By 2025, the coatings used in North America on transformers and enclosures is expected to be nearly \$110M. Many OEMs follow the specifications established by the Institute of Electrical and Electronics ...



Equipped with a removable **Mounting Plate** inside the enclosure, enabling customized drilling and secure component mounting.

This document specifies the requirements necessary and background information available for supporting denial of requests from those other than PG& E concerning modification of exterior ...



These paint and related coating standards help paint manufacturers and end-users in the appropriate testing and application procedures for the coating of their concern.



Each required lamp, reflective device, and item of associated equipment must be designed to conform to the requirements of applicable SAE publications as ...



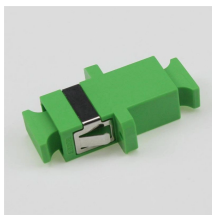
The purpose of the advisory notice [PDF, 232 KB] is to draw the attention of developers and owners of multiple occupancy buildings, and their electrical consultants and contractors to the ...



The Manual on Uniform Traffic Control Devices for Streets and Highways —the MUTCD— defines the standards used by road managers nationwide to install and maintain traffic control devices on all ...



This publication has been prepared to provide a compilation of standard requirements used by the North Carolina Department of Transportation for construction contracts.



NFPA publishes 300+ codes and standards that are informed by rapidly changing industry needs and ever-evolving technologies.



The Service Standards & Guide presents general and detailed information to help ensure that a service installation will be adequate for present and future power needs.



To that end, Labsphere has developed three standard coatings that can be applied to many substrates that give a flat spectral response over a wide wavelength range, are highly diffuse and highly ...

Contact Us

For more information, pricing, or custom energy solutions, please contact us:

Website: <https://www.gdroofing.co.za>

Email: sales@gdroofing.co.za

Phone: +27 72 418 9365

Address: 22 Electron Avenue, Isando, Johannesburg, 1600, South Africa

This document is for informational purposes only. Specifications subject to change without notice.

