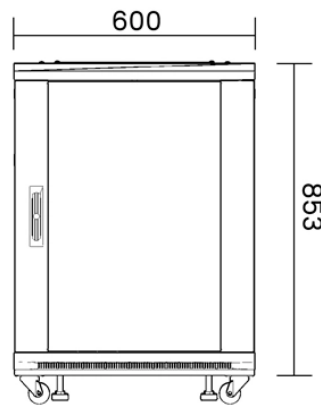


## Standards for Protective Barriers for Network Cabinets



## Standards for Protective Barriers for Network Cabinets



This report presents best practices for overall network security and protection of individual network devices. It will assist administrators in preventing an adversary from exploiting their...



Where further protection is needed, barriers shall be utilized. At night, warning lights shall be prominently displayed, and excavated areas shall be enclosed with protective barricades.



Every enclosure must provide at least IP2X or IPXXB protection against direct contact. We add measures to prevent accidental contact with voltages over 50 V, ...



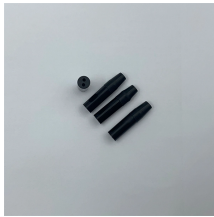
All CAD work performed as part of the design effort shall be in compliance with the current City of Houston CAD standards as well as the U.S. National CAD Standard.



Understanding NEC bollard requirements ensures electrical equipment protection while maintaining code compliance. Proper application of Articles 110.26 and ...



Choosing the right enclosure means considering material durability, environmental protection, climate control, and secure access. Regular maintenance, proper installation, and ...



OSHA provides essential guidelines to ensure compliance with workplace safety standards, safeguarding both employees and equipment. Here's a comprehensive guide to the top ...



There are two main standards: NEMA (National Electrical Manufacturers Association) in the U.S., and IEC (International Electrotechnical Commission) worldwide. See the charts below for each standard's ...



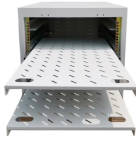
For SCIF renovation projects, barriers shall be installed to segregate construction workers from operational activities and provide protection against unauthorized access and visual observation.



The table below provides descriptions of typical NEMA ratings along with the level of protection they provide. Use this table to determine the level of protection required in your specific environment and ...



All Armagard enclosures are protected from liquids and particulate matter and are constructed according to International NEMA standards as well as European IP standards.



Modern standards increasingly focus on protecting the data flowing through your network. This includes ensuring cabinets don't emit electromagnetic interference that could disrupt other devices, and that ...

## Contact Us

For more information, pricing, or custom energy solutions, please contact us:

Website: <https://www.gdroofing.co.za>

Email: [sales@gdroofing.co.za](mailto:sales@gdroofing.co.za)

Phone: +27 72 418 9365

Address: 22 Electron Avenue, Isando, Johannesburg, 1600, South Africa

This document is for informational purposes only. Specifications subject to change without notice.

