

Steps for making a 90° elbow in a cable tray



Overview

Creating a 90-degree elbow in an electrical cable tray, often called a "fabricated" or "mitered" bend, involves cutting, bending, and fastening a straight section of tray. The most common method involves creating two 45-degree cuts to form a 90-degree angle. The length of the bottom side (bottom diagonal) after bending the cable tray should be equal to the width of the cable. Here's how to create a seamless rolling 90-degree bend in cable tray! ☐☐ This guide walks you through each step, from marking and cutting to forming and joining. How to bend 90 degree of cable tray 3 line with the same distance :// • HOW TO BEND 90 DEGREE OF CABLE TRAY 3 LINE.

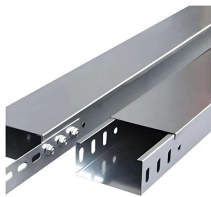
Steps for making a 90° elbow in a cable tray



Creating a 90-degree elbow in an electrical cable tray, often called a "fabricated" or "mitered" bend, involves cutting, bending, and fastening a straight section of tray. The most common...



How to make a 90 electrical cable tray bend to measurement of your choice. Great if you are new or just forgot how to do it, this easy to follow guide makes it so simple....more



Cable Tray 90° Downward Bend Elbow Formula | Step-by-Step Fabrication Tutorial #CableTray #ElectricalInstallation #EngineeringTips



The document provides instructions for forming various bends and joints in electrical trunking and cable trays. It describes: 1) How to mark and cut a right-angle internal bend in a section of trunking, ...



Here's how to create a seamless rolling 90-degree bend in cable tray! ☐☐ This guide walks you through each step, from marking and cutting to forming and joining.



The assembly guide below will help the cable tray installer make the bends and others without difficulty even he had never installed wire mesh cable trays before.



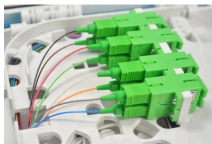
This tutorial covers the exact cutting formula and bending techniques used in industrial electrical installations. Key Topics Covered: Measurement and marking for 200x100mm cable trays.



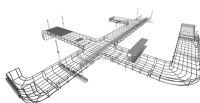
Making bent elbows for cable trays according to the formulas provided in the diagram is for reference only. The data is directly related to the width or height of the cable tray, and calculations can be ...



How to bend 90 degree of cable tray accurate to joint and support with 22.5 degree offset • HOW TO BEND 90 DEGREE OF A CABLE TRAY AC...



The document provides instructions for forming various bends and joints in electrical trunking and cable trays. It describes: 1) How to mark and cut a right-angle ...



This is a step by set guide on how to make (fabricate) a 90 degree bend in metal cable tray and use a cable tray bending machine to make the same bend. Videos are training aids for City and Guilds (C and G) and EAL courses ...

Contact Us

For more information, pricing, or custom energy solutions, please contact us:

Website: <https://www.gdroofing.co.za>

Email: sales@gdroofing.co.za

Phone: +27 72 418 9365

Address: 22 Electron Avenue, Isando, Johannesburg, 1600, South Africa

This document is for informational purposes only. Specifications subject to change without notice.

