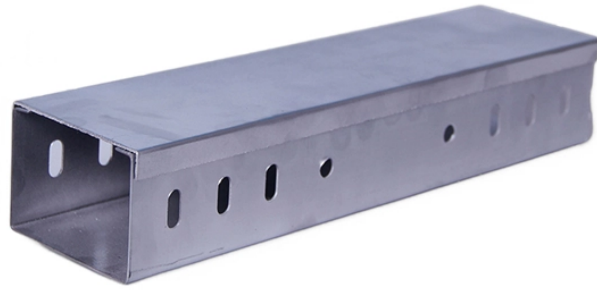


# **Sudanese Pipeline Distribution Box Specifications**



## Sudanese Pipeline Distribution Box Specifications



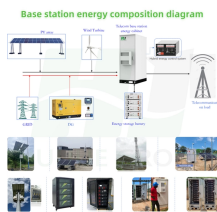
Block 3& 7 Pipeline is 1472 km, 32 inch with 6 pump stations, a daily capacity of maximum 750 thousand barrels and 1 Marine Terminal capable of storing 3 million barrels.



The facility is fully equipped with cathodic and lightning protection systems, ensuring operational safety and compliance with industry standards. The Nepta Storage Depot is a critical asset for Port Sudan, ...



Once completed, this system will allow the operator to monitor and control a number of critical parameters such as pipeline flow, pressure, temperature, to issue control commands and track ...



The crude enters the 2x 36" export pipelines and is loaded in to tankers via the CALM system. The overall offshore SPM, under normal operation, is used to take conventional 300,000 DWT tankers. ...



This document is a material requisition for special pipeline items including isolation joints, hot induction bends, and barred tees for an oil and gas project in Sudan. It ...



Project list ... 1. Alfula Town Power Plant Fuel Gas Supply ... 2. Gas to Liquid Plant (GTL) ... 3. Sudan LNG Receiving terminal and distribution system ... 4. Block 8 ... 5. Block 2AE ... 6. Block 15



To obtain optimum results for a pipeline transmission system, complex economic and engineering studies are necessary to decide on the pipeline diameter, material, compression/pumping power ...



Blocks that are open and licensed are shown, with block operators and oil and gas fields marked, alongside associated mid- and downstream infrastructure such as pipelines, tanker ...



This strategic depot features advanced infrastructure designed for the safe storage and transfer of gasoil, gasoline, and fuel oil. The Nepta Storage Depot is a critical asset for Port Sudan, enhancing ...



It outlines requirements for surveying the pipeline route, excavating the trench, installing the pipeline and other components, backfilling the trench, and documenting the as-built location of ...



Each box and package therein shall be clearly labelled stating the number, size and description of the contents.

## Contact Us

For more information, pricing, or custom energy solutions, please contact us:

Website: <https://www.gdroofing.co.za>

Email: [sales@gdroofing.co.za](mailto:sales@gdroofing.co.za)

Phone: +27 72 418 9365

Address: 22 Electron Avenue, Isando, Johannesburg, 1600, South Africa

This document is for informational purposes only. Specifications subject to change without notice.

