

Surge Wiring of Photovoltaic DC Combiner Box



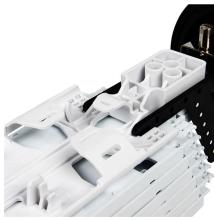
Overview

“Learn to wire an ETEK Solar PV DC Distribution Box (aka PV combiner box) in this step-by-step tutorial. This equipment is essential for managing DC power from solar panels in photovoltaic systems, integrating components like DC circuit breakers and surge . The Solar Combiner Box plays a critical role in organizing multiple DC strings into a single output for the inverter. They enable centralized management in large-scale and remote installation ity), equipment aging, and poor installation practices. Proper installation and regular maintenance ensure it protects your array from overcurrent, surges, and ground faults - and helps avoid costly downtime. It is used to combine different solar panel strings into one easily managed output.

Surge Wiring of Photovoltaic DC Combiner Box



External DC combiner boxes are used with central inverters in large-scale solar farms to consolidate thousands of strings and with single-mppt string inverters which can be managed as ...



This piece will address the components required for a DC PV combiner box, how to read its wiring diagram and provide a step-by-step tutorial on how to wire it safely and efficiently.



Learn how to wire a combiner box with this diagram. Understand the different components and their connections, ensuring a safe and efficient electrical system.



The DC surge protective device (DC SPD) inside the solar combiner box is the primary defence against lightning-induced surges and switching transients on the PV array wiring.



Learn how to install and maintain a solar combiner box properly. This step-by-step guide covers mounting, wiring, fuse sizing, and regular checks to keep your PV system safe and efficient.



This document describes an electric box for solar photovoltaic systems. It provides specifications for different models with varying numbers of inputs and outputs.



The output cables must be connected to a Level 2 combiner box, which will join DC+ and DC- from other Level 1 combiner boxes, or directly to the solar inverter.



Learn how to safely install and wire a solar combiner box for DC PV systems. Step-by-step guide covers wiring, grounding, surge protection (SPD), and best practices for solar panel arrays.



A PV combiner box is an essential component of a solar photovoltaic (PV) system, allowing multiple PV strings to be connected and combined into one output. The wiring diagram for a PV combiner box ...



“Learn to wire an ETEK Solar PV DC Distribution Box (aka PV combiner box) in this step-by-step tutorial. This equipment is essential for managing DC power from solar panels in...

Contact Us

For more information, pricing, or custom energy solutions, please contact us:

Website: <https://www.gdroofing.co.za>

Email: sales@gdroofing.co.za

Phone: +27 72 418 9365

Address: 22 Electron Avenue, Isando, Johannesburg, 1600, South Africa

This document is for informational purposes only. Specifications subject to change without notice.

