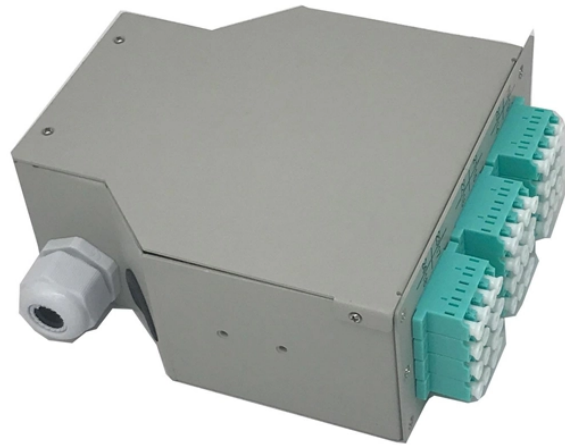


Swiss Silicon Photonics Technology DML



Swiss Silicon Photonics Technology DML



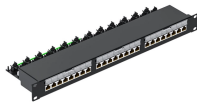
Adds Plasmonics-based Modulation Technology and a Team with Deep Silicon Photonics Expertise to Advance Marvell's Optical Roadmap SANTA CLARA, Calif.-- (BUSINESS WIRE)-- ...



Technology Transition Threatens Traditional DML Applications Emerging optical technologies pose existential challenges to traditional DML applications. Silicon photonics solutions are achieving cost ...



The DML itself is a single chip and provides a simpler electrical circuit layout for operation. Hence, it will produce a more compact design and lower power consumption.



We developed energy-efficient membrane III-V distributed-reflector lasers on silicon-based substrates for ultrafast short-reach communication links and neuromorphic ...



The price of an EML laser can be several times that of a DML laser of the same rate. It is worth noting that with the rise of silicon photonics technology, traditional boundaries are becoming ...



We developed energy-efficient membrane III-V distributed-reflector lasers on silicon-based substrates for ultrafast short-reach communication links and neuromorphic computing applications.



Section II discusses the design and technology of the Si photonic architecture and its operation for the multiplexing and carving of the DML signals. The wavelength locking platform employed for the ...



We chart the generational trends in silicon photonics technology, drawing parallels from the generational definitions of CMOS technology.



Their primary product is a continuous-wave laser designed for various applications, including scientific research, industrial use, and consumer markets. The company is headquartered in Lausanne, ...



DMLs work by modulating the laser current directly to encode the signal. As the simplest and most cost-effective laser technology, DMLs are commonly used for short-range applications. ...



Silicon photonic modulators are also based on electroabsorption or the Mach-Zehnder effect, and in today's pursuit of ultimate energy efficiency and integration, EML's market share is ...

Contact Us

For more information, pricing, or custom energy solutions, please contact us:

Website: <https://www.gdroofing.co.za>

Email: sales@gdroofing.co.za

Phone: +27 72 418 9365

Address: 22 Electron Avenue, Isando, Johannesburg, 1600, South Africa

This document is for informational purposes only. Specifications subject to change without notice.

