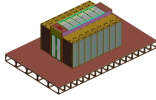


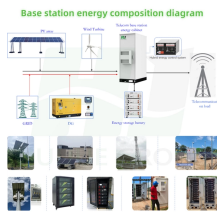
Switching on the power distribution box at the construction site



Switching on the power distribution box at the construction site



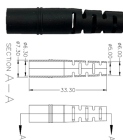
Temporary power distribution boxes for flexible electrical installation. Robust solutions for construction sites, events and temporary energy infrastructure.



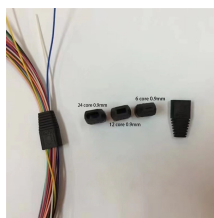
The references on this page provide information related to electrical in construction including OSHA's electrical construction regulations, hazard recognition, possible solutions and general resources.



Wiring Direction: Wiring between the main circuit breaker and each branch circuit breaker in the box generally goes on the left, and the wiring out of the distribution box generally goes on the ...



Here are some of the best ways to keep your temporary jobsite power setup compliant, safe, and smart. The NEC governs electrical installations in the U.S., and Article 590 specifically ...



METHOD STATEMENT FOR Electric panel and distribution box installation and termination - Free download as PDF File (.pdf), Text File (.txt) or read online for free. This document provides a method ...



Power supply on construction sites is crucial to run all the equipment and tools needed to complete a project. However, distributing power correctly on a construction site can be challenging, especially ...



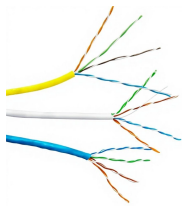
In this video we are showing a complete Construction Site Electrical Distribution Panel setup. This includes MCCB, MCB, DB boxes, cable management, earthing and load distribution for...



It's important to make sure you review all OSHA regulations and other applicable standards when implementing temporary power distribution boxes. If you're working on a ...



In this article, we'll break down what a distribution board is, what components it includes, how to choose the right one, and why it matters for the safety and efficiency of any construction site.



Discover how to supply temporary power safely on construction sites using E-abel distribution boxes, industrial plug sockets, and IP67 connectors for reliable outdoor electricity.

Contact Us

For more information, pricing, or custom energy solutions, please contact us:

Website: <https://www.gdroofing.co.za>

Email: sales@gdroofing.co.za

Phone: +27 72 418 9365

Address: 22 Electron Avenue, Isando, Johannesburg, 1600, South Africa

This document is for informational purposes only. Specifications subject to change without notice.

