

## TP optical module 10 Gigabit multimode



## TP optical module 10 Gigabit multimode



Learn how multimode SFP+ (10GBASE-SR) transceivers work, including fiber types, transmission distance, specifications, and common data center use cases.



Widely support Gigabit Ethernet, Fiber Channel, Other Optical Links and other devices. [Easy to Use] Easy installation, plug and play, fully hot-pluggable with ESD protection.



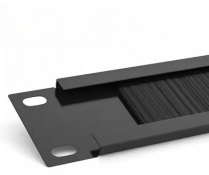
FS 10GbE SFP+ module solutions provide a wide variety of 10 Gigabit Ethernet connectivity options for data centers, enterprise wiring closets, Internet Service Providers (ISPs) applications.



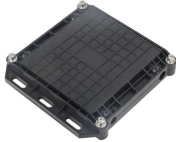
Code: SF-10GSFPPLCL-000 Genuine Amphenol 10GBASE-SR SFP+ Optical Transceiver Modules provide a high-density, high-performance interface for 10-Gigabit Ethernet and Fibre Channel ...



It easily extends the distance of an existing gigabit network via fiber optic when integrated with the SFP Module. The MC420L applies the IEEE 802.3ae 10GBASE-SR/LR 10G Ethernet & IEEE 802.3an ...



Insert TL-FM531 for an easy and quick conversion between SFP+ fiber and 10G Ethernet. It covers up to 98.4ft (30m) \* using Cat6a/Cat7 or above cable for 10G connection in various applications. High ...



The MC420L is a media converter designed to convert between ...



The Intellinet Network Solutions 10 Gigabit Fiber SFP+ Optical Transceiver Module (model 507462) is fully hot-pluggable, and that allows you to install the module without rebooting your network switch ...



TP-Link TL-SM5110-SR 10-Gigabit 10GBASE-SR Multimode Fibre SFP+ Module, LC Connector (up to 300m) The TP-Link SM5110-SR 10GBase-SR Multimode SFP+ Module is designed to extend ...



The MC420L is a media converter designed to convert between 10GBASE-SR/LR fiber, 10GBASE-LRM fiber and 10GBASE-T copper media. It easily extends the distance of an existing ...



This data sheet describes the benefits, specifications, and ordering information for the Cisco SFP Modules for Gigabit Ethernet Applications.

## Contact Us

For more information, pricing, or custom energy solutions, please contact us:

Website: <https://www.gdroofing.co.za>

Email: [sales@gdroofing.co.za](mailto:sales@gdroofing.co.za)

Phone: +27 72 418 9365

Address: 22 Electron Avenue, Isando, Johannesburg, 1600, South Africa

This document is for informational purposes only. Specifications subject to change without notice.

