

# **Terminal Optical Distribution Module**



## Terminal Optical Distribution Module



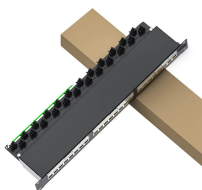
FS offers passive optical components & termination equipment to meet flexible optical network needs by fiber signal attenuation, separation, termination, etc.



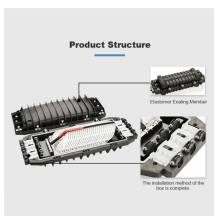
Fiber distribution terminal serves as the central interface between incoming feeder fibers and outgoing drop fibers. It supports stable routing, splicing, and protection of optical cables while keeping service ...



As a professional fiber optical terminal box manufacturer, UnitekFiber provides fiber terminal boxes with various waterproof levels, up to IP68; and provides a variety of options from 2 ports to 48 ports. Fiber ...



\$ 51.99 Free Shipping Add to cart Compare Fyboptwu - 8 Core Fiber Optical Terminal Box Fiber Optic Distribution Enclosure FTTH Fiber Optic Accessories 6.45 x 7.88 x 1.97inch (with 1pc 1 to 8 SC/APC ...



Explore reliable FTTH terminal boxes for secure fiber termination and distribution. Wall-mounted design, robust build, for home and industrial optical networks.



ODC-288A SMC Fiber Distribution Terminal  
FDT/ODC/OCC.



As a professional fiber optical terminal box manufacturer, UnitekFiber provides fiber terminal boxes with various waterproof levels, up to IP68; and provides a variety ...



They are with the function of mechanical splice, fusion splice, light splitting, wiring distributions etc. AZE's Fiber optical distribution box is used as a termination point for the feeder cable to connect with ...



Made from high-quality steel and electrostatic spray finished, this patch panel is ideal for optical telecommunication systems, FTTH, WAN, TV networks and cable terminal branch connections.



FTBs utilize sliding adapter packs to gain easy access to both the front and rear terminations. To accommodate varying network requirements and speed installation, FTBs can be ordered with ...



These modular housings are compatible with interchangeable panels and modules to maximize configurability for complex multidwelling unit (MDU) environments. MTP® panels and MTP-to-SC ...

## Contact Us

For more information, pricing, or custom energy solutions, please contact us:

Website: <https://www.gdroofing.co.za>

Email: [sales@gdroofing.co.za](mailto:sales@gdroofing.co.za)

Phone: +27 72 418 9365

Address: 22 Electron Avenue, Isando, Johannesburg, 1600, South Africa

This document is for informational purposes only. Specifications subject to change without notice.

