

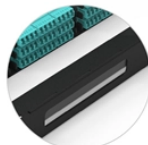
The beam splitter divides the beam into 216 groups

Pre-Terminated Patch Panel

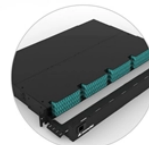
- Standard 19" width
- Max 144 fibers in 1U
- MPO/Fusion Dual-Purpose



Removable Cable Management Tray



Transparent Front Cover



High-Quality Matte Coated Steel

Overview

A beam splitter or beamsplitter is an optical device that splits a beam of light into a transmitted and a reflected beam. It is a crucial part of many optical experimental and measurement systems, such as interferometers, also finding widespread application in fibre optic telecommunications. The resulting beams are directed along different paths, allowing a single light. Two components really drive this process: the beam splitter and the detector.



The beam splitter divides the beam into 216 groups



The elements of the beam splitter transformation matrix B are determined using the assumption that the beamsplitter is lossless. While a beamsplitter is never lossless, it is a good approximation for most ...



Quick-reference guide for beam splitters — key equations, type comparison tables, Fresnel reflectance, polarizing designs, and a practical selection workflow. Condensed from the comprehensive guide.



A beam splitter is defined as an optical device that divides and recombines an optical beam of light, typically using half-silvered mirrors that reflect approximately 50% of the incident energy while ...



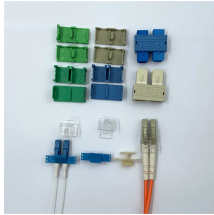
Beam splitters are devices for splitting a laser beam into two or more beams. There are different types, including polarizing and non-polarizing versions.



A beam splitter or beamsplitter is an optical device that splits a beam of light into a transmitted and a reflected beam. It is a crucial part of many optical experimental and measurement systems, such as ...



A beam splitter is an optical instrument that divides an incoming light beam into two or more separate beams. This passive device uses a specialized surface designed to both reflect and ...



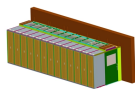
In order to divert light collected by the objective into both eyepieces, it is first divided by a beamsplitter and then channeled through reflecting prisms into parallel cylindrical optical light pipes.



A broadband infrared source hits a beam splitter, which splits the light into two paths—one heads to a fixed mirror, the other to a moving mirror. The reflected beams meet up again ...



A beam splitter or beamsplitter is an optical device that splits a beam of light into a transmitted and a reflected beam. It is a crucial part of many optical experimental and measurement ...



In order to divert light collected by the objective into both eyepieces, it is first divided by a beamsplitter and then channeled through reflecting prisms into parallel ...



Explore the precision, applications, and design principles of beam splitters, essential for advancements in scientific research and technology. Beam splitters are integral optical components ...

Contact Us

For more information, pricing, or custom energy solutions, please contact us:

Website: <https://www.gdroofing.co.za>

Email: sales@gdroofing.co.za

Phone: +27 72 418 9365

Address: 22 Electron Avenue, Isando, Johannesburg, 1600, South Africa

This document is for informational purposes only. Specifications subject to change without notice.

