

## GDR Telecom Site Energy Systems

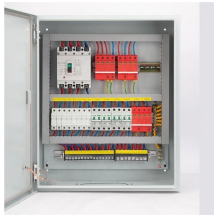
**The distribution box has a reserved capacity of 28kW**



## The distribution box has a reserved capacity of 28kW



The main objective of a modern modern power distribution system is to provide quality and uninterrupted power supply to the building so that there is no disruption to the productive ...



Understand distribution boxes (DB boxes) in 5 minutes. Learn about types, components, functions, and uses. Find the perfect DB box for your needs.



Proper box fill calculation is crucial for electrical safety and code compliance. Our Box Fill Calculator helps you determine if your electrical box has sufficient capacity for all conductors and devices.



Summary: Residential Electrical Load Calculator, Online and Interactive provides accurate main service panel load calculations. No explanation needed. Short Explanations to help ...



Calculate electrical box fill capacity according to NEC requirements to ensure code compliance and safe installation.



Submittals Addendum Wiring Diagrams for  
Condensing Units of 28 kW and 35 kW Vertiv™  
Coolphase Condensing Unit Submittals Addendum  
The information contained in this document is  
subject to ...



To this end, electrical equip- ment such as  
distribution boards and transformers is selected  
and rated in such a way that an optimum result as  
a whole is achieved rather than focusing on  
individual ...



It discusses concepts like maximum demand, load  
factors, diversity factors, reserve capacity, and  
daily load curves. The document aims to provide  
engineering students with examples to calculate  
values ...



Use this box fill calculator to find the correct size  
of electrical utility box to fit the conducting wires,  
grounding wires, and devices or equipment you  
would need to install and have it pass the National  
...



If the alternate power supply doesn't have  
adequate capacity to carry the entire load, it must  
have automatic selective load pickup and load  
shedding to ensure adequate power in the  
following order ...

## Contact Us

For more information, pricing, or custom energy solutions, please contact us:

Website: <https://www.gdroofing.co.za>

Email: [sales@gdroofing.co.za](mailto:sales@gdroofing.co.za)

Phone: +27 72 418 9365

Address: 22 Electron Avenue, Isando, Johannesburg, 1600, South Africa

This document is for informational purposes only. Specifications subject to change without notice.

