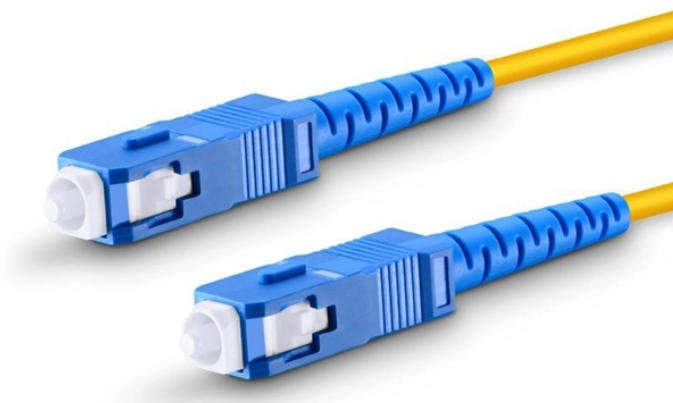


## The grounding wire of the distribution box is not connected to the neutral wire



### Overview

The grounding conductor, often bare copper or green-insulated, connects to a terminal bonded to the metallic enclosure. Confirm that this terminal is mechanically fastened and shows continuity with ground rods or grounding electrodes outside the structure. Never interchange. Correct grounding of services depends upon understanding the definition and role of the grounded conductor. These two conductors serve fundamentally different safety functions, even though they may sometimes connect. The following systems must be grounded (connected to the earth) if the neutral conductor is used as a circuit conductor: (1) Single-phase systems. (2) Three-phase, wye-connected systems. InspectAPedia tolerates no conflicts of interest.

## The grounding wire of the distribution box is not connected to the r



It is important that the grounding and the neutral wire be separated from each other inside the subpanel to eliminate identified hazards. Additional enhancement in energy and effort ...



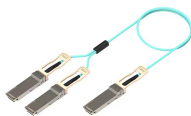
There was no ground wire connection back to the main electrical panel, just incoming hot wires and incoming neutral wire. The panel's incoming neutral wire from the home was not connected.



Electrical panel ground wires can't serve as neutral wires because they're not designed to be a return path for the current, which is essentially the latter's main function.



A comprehensive guide on properly grounding an electrical panel according to NEC Article 250. Learn the difference between grounding and bonding, electrode types, and safety steps.



Bonding jumper: Connects the neutral and ground bars in the main service panel grounding setup (not used in subpanels). The integrity of the entire system depends on correct ...



Dangerous voltage from a ground fault will not be removed from metal parts, metal piping, and structural steel if the service-disconnect enclosure is not connected to the service neutral conductor.



Master the fundamental safety difference between neutral and ground wires and the strict rules governing where they must connect or separate.



Attach the neutral conductor to the isolated neutral bus bar. In main panels, the neutral and ground bars are bonded; confirm the bonding screw or strap is properly installed according to code requirements. ...



Dangerous voltage from a ground fault won't be removed from metal parts, metal piping, and structural steel if the service disconnect enclosure isn't connected to the service neutral conductor.



According to NEC Article 250, both the neutral and ground wires must be connected only in the main panel or at the first service disconnect. They should never be connected together downstream of the ...



It is important that the grounding and the neutral wire be separated from each other inside the subpanel to eliminate identified hazards. Additional ...

## Contact Us

For more information, pricing, or custom energy solutions, please contact us:

Website: <https://www.gdroofing.co.za>

Email: [sales@gdroofing.co.za](mailto:sales@gdroofing.co.za)

Phone: +27 72 418 9365

Address: 22 Electron Avenue, Isando, Johannesburg, 1600, South Africa

This document is for informational purposes only. Specifications subject to change without notice.

