

The live wire in the distribution box is grounded



Overview

The live wire sends the power out (fast lane). Here's a full breakdown to make things clearer: Carries current normally?

Shock hazard?

Today, we're diving deep into the world of distribution box grounding, breaking down the standards, and shining a light on those sneaky mistakes that even experienced electricians sometimes make. Each DISTRIBUTION BOX and controller must be grounded. 26 mm² (10 AWG) ground wire must be used, and in all other markets a 6 mm² must be used. Grounding includes any grounding conductors, grounding electrodes, and the connections used to securely fasten these parts together. For our circuit protection devices to work properly, the. The purpose of this paper is to explain the causes of N-G voltages, reasons why N-G voltage adversely affects electronic equipment and present some solutions to N-G voltage issues. The distinction between 1P and 2P circuit breakers plays a pivotal role in determining the appropriate protection level for various circuits.

The live wire in the distribution box is grounded



Learn about the wiring process for a 3 phase distribution board (DB) box, including the necessary steps and safety precautions. Understand how to connect the incoming power supply, distribute it to ...



Modern power distribution within a home or commercial building located in North America consists of LINE, NEUTRAL, and GROUND. The LINE wire is energized with the circuit voltage of 120V. The ...



Now, consider the same example as before, except the box is installed in a wood frame building and the ground wire has come loose. When the live wire touches the metal box, there is no low resistance ...



Live (L) Wire Connection: In a distribution box setup, the incoming live wire (also known as phase or hot wire, denoted as L or Line) connects to the line terminal of the circuit breaker. This ...



Your distribution box is mission control for electricity in any building. When grounding fails here, it's like having a spaceship without a heat shield—everything inside becomes vulnerable to surges, faults, ...



Open the distribution box and find the position marked with the grounding plate or PE letter. This position is the connection point of the grounding wire in the box.



Open the distribution box and find the position marked with the grounding plate or PE letter. This position is the connection point of the grounding ...



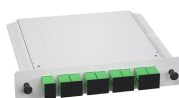
Grounding is needed for electric safety and it also creates a reference point in a circuit to which voltages are measured. Earth is a direct physical connection to the Earth. This is usually done by driving a ...



Live (L) Wire Connection: In a distribution box setup, the incoming live wire (also known as phase or hot wire, denoted as L or Line) connects to the line ...



Learn the real difference between live, neutral, and ground wires. Color codes, wiring safety tips, and expert advice from HUYU Electric—all in one guide.



Each DISTRIBUTION BOX and controller must be grounded. On the US market, a 5.26 mm² (10 AWG) ground wire must be used, and in all other markets a 6 mm² must be used.



NEC (National Electrical Code) Article 250 covers grounding and bonding for electrical installations to protect from electrical shock and ensure correct operation of the electrical system.

Contact Us

For more information, pricing, or custom energy solutions, please contact us:

Website: <https://www.gdroofing.co.za>

Email: sales@gdroofing.co.za

Phone: +27 72 418 9365

Address: 22 Electron Avenue, Isando, Johannesburg, 1600, South Africa

This document is for informational purposes only. Specifications subject to change without notice.

