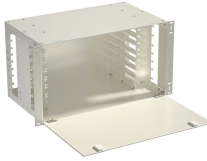


GDR Telecom Site Energy Systems

The most standard size for a household electrical distribution box



The most standard size for a household electrical distribution box



Find the right electrical DB box size for your home or project. Learn standard dimensions, NEC 2026 compliance, and key specs. Click to get expert sizing advice now.



Choosing the right electrical box size is crucial for safety and efficiency. Consider the number of devices and future upgrades to avoid overcrowding. Single-gang boxes are ideal for one ...



The National Electrical Code restricts the number of conductors that are allowed in a single electrical box. How many conductors are allowed is determined by the size of the box and the size of the ...



In this article, we will explore the specifications for household distribution boxes and provide guidance on how to install them correctly. Specifications of Household Distribution Boxes



Learn standard electrical box dimensions for outlets, switches, and junction boxes. Compare sizes, depths, volume, and clearance for safe installations.



Explore standard panel sizes, applications, and key differences for residential, commercial, and industrial use.



But of all the variables to consider when choosing boxes, size (capacity) usually trumps the others. Correctly sized boxes are required by code and make your job easier because you don't have to ...



Q: How do I know what size electrical panel my house needs? A: Most modern homes require at least 200 amps, but it depends on your square footage, appliances, and future plans.



Electrical enclosure sizes are not universal, but most manufacturers follow common size families. This guide explains typical wall-mount and floor-standing dimensions, how to read catalog ...



Electrical panels (also called breaker boxes) come in several different sizes and are measured in Amps. Amps are used to indicate the maximum electrical load the panel can handle. The most standard ...

Contact Us

For more information, pricing, or custom energy solutions, please contact us:

Website: <https://www.gdroofing.co.za>

Email: sales@gdroofing.co.za

Phone: +27 72 418 9365

Address: 22 Electron Avenue, Isando, Johannesburg, 1600, South Africa

This document is for informational purposes only. Specifications subject to change without notice.

