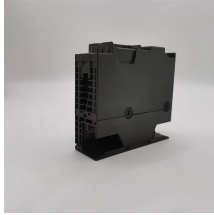


Time and light control module bw- zm-12c



Time and light control module bw-zm-12c



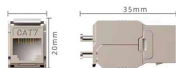
Starting with the 1994 BMW 7-series, the light module and check control module were combined into one unit, the LCM, that was then used on cars up to the present.



Search our large inventory of New/Used Kenworth Light Control Modules for sale. Enjoy our hassle-free online checkout or call to speak to an expert.



Video guide on how to remove and install BMW Light Control Module.



We offer factory BMW Light Control Modules for all BMW series and models.



Digital control time switches ZCM-12 are used to realise the time functions in automation and control systems. Weekly programmers realise output relay control operations according to program ...



Read this article to find out what the lighting control module is, what it does, how to reset it, and more.



In this article, I will go over the steps involved with replacing the headlight switch and separating it from the lighting control module in E46 models.* Keep in mind that when your car was ...



☐☐ Yet another collection of wordlists. Contribute to [kkrypt0nn/wordlists](#) development by creating an account on GitHub.



Some of these tools include time management guides, coaching templates, goal setting guides and worksheets, interviewing guides, critical conversation tips, performance improvement plans, and ...



Yes, the lighting control module (LCM in BMW speak) needs to be programmed or else you'll get a temper dot in the gauge cluster.

Contact Us

For more information, pricing, or custom energy solutions, please contact us:

Website: <https://www.gdroofing.co.za>

Email: sales@gdroofing.co.za

Phone: +27 72 418 9365

Address: 22 Electron Avenue, Isando, Johannesburg, 1600, South Africa

This document is for informational purposes only. Specifications subject to change without notice.

