

## Transformer relay protection refers to what



## Transformer relay protection refers to what



Transformer protection relays are used for protection, control, measurement and supervision of power transformers.



The suite of overcurrent elements (51, Section 8) is generally considered backup transformer protection, or for protection of the bus and backup protection for the feeder relays.



Complete guide to transformer protection covering Buchholz relay, differential protection, overcurrent, overheating, and over-fluxing protection. Learn about transformer failure causes and protection ...



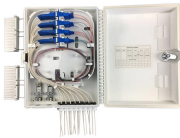
Both windings of a transformer can be protected separately with restricted earth fault protection, thereby providing high-speed protection against ...



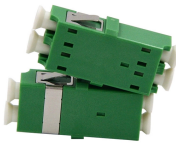
Transformer protection relay strategy explains when overcurrent alone is insufficient, how internal faults, inrush, and ground conditions alter risk, and why transformer ...



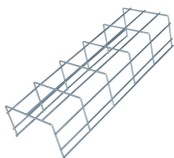
Light gas protection: When a slight fault or abnormality occurs inside the transformer, the fault point is partially overheated, causing part of the oil to expand, the gas in the oil forms bubbles ...



Both windings of a transformer can be protected separately with restricted earth fault protection, thereby providing high-speed protection against earth faults for the whole transformer with ...



Complete guide to transformer protection covering Buchholz relay, differential protection, overcurrent, overheating, and over-fluxing protection. Learn about ...



Learn how a transformer protection relay works in simple terms. Understand faults, relay types, and why modern relay protection is essential for power transformer safety.



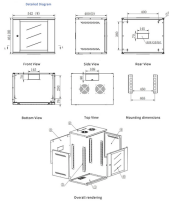
Purpose This guide focuses primarily on application of protective relays for the protection of power transformers.



This guide deals primarily with the application of electrical relays and over-current protective devices to detect the fault current that results from an insulation failure.



Usually, protective relays are used for transformers of voltage range 33kv and above which uses circuit breakers in the primary and secondary side. Drop out fuses or other types of fuses ...



Because sensitive, high-speed protection systems can reduce damage and consequently reduce repair cost, the protection aspects of relays are important considerations when protecting transformers, ...

## Contact Us

For more information, pricing, or custom energy solutions, please contact us:

Website: <https://www.gdroofing.co.za>

Email: [sales@gdroofing.co.za](mailto:sales@gdroofing.co.za)

Phone: +27 72 418 9365

Address: 22 Electron Avenue, Isando, Johannesburg, 1600, South Africa

This document is for informational purposes only. Specifications subject to change without notice.

