

Tray-type cable trays are trough-type



Tray-type cable trays are trough-type



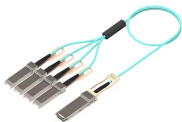
What type of cable tray should be used for the main runs of a cable tray wiring system? The cable tray types to choose from are ladder, ventilated trough, or solid bottom.



A professional guide to trough type cable trays. Explore load capacity charts, installation guidelines, advantages over ladder type, and key selection criteria for your project.



Trough-type cable tray is a fully enclosed cable tray. It is ideal for laying computer cables, communication cables, thermocouple cables, and other control cables for highly sensitive systems.



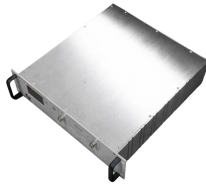
From a design standpoint, trough trays emphasize continuous cable support while maintaining moderate structural strength. They occupy a middle ground between ladder trays and ...



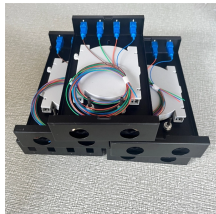
Explore all types of cable trays—ladder, perforated, basket, solid, and channel. Learn their uses, materials, pros, cons, and key differences.



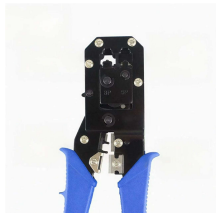
Unlike ladder or wire mesh cable trays, trough type cable trays use a fully enclosed structure formed from a single steel sheet, creating a protective channel that shields cables from ...



Trough (Ventilated) Tray: Features a ventilated bottom, offering a balance between the strength of a ladder tray and the protection of a solid bottom. It provides good cable ventilation with ...



Trough (Ventilated) Tray: Features a ventilated bottom, offering a balance between the strength of a ladder tray and the protection of a solid ...



Confused about cable management? Learn the differences between Trough Cable Tray, Solid Bottom Cable Tray, and Cable Trunking. We simplify cable support for you.



Cablofil steel trough trays provide the strength and security required when then need to limit cable access is of primary importance.



A trough cable tray is partially enclosed, offering more cable protection than ladder trays. Applications: Power distribution systems, Industrial indoor installations.

Contact Us

For more information, pricing, or custom energy solutions, please contact us:

Website: <https://www.gdroofing.co.za>

Email: sales@gdroofing.co.za

Phone: +27 72 418 9365

Address: 22 Electron Avenue, Isando, Johannesburg, 1600, South Africa

This document is for informational purposes only. Specifications subject to change without notice.

