

Unit price of secondary control circuit in distribution box



Unit price of secondary control circuit in distribution box



Mini Center Compact is a reliable range of distribution boards allowing maximum flexibility, offering wide choice of incomers: Switch Disconnecter, MCCB, MCB, RCCB, RCD or direct cable connection.



Kaedra enclosures for PratiKa industrial sockets are part of a complete system of Watertight enclosures from 16A to 125A providing solutions for protection, control and electrical distribution for tertiary and ...



Introduction distribution technology. The “P Series” line of panelboards offers a stepped approachable panelboard family. Engineered specifically to provide maximum flexibility, the new designs simplify ...



This document is a price list for various electrical distribution, wiring devices, and lighting control products effective from February 3rd, 2025. It includes detailed ...



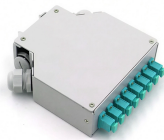
secondary unit substation is a close-coupled assembly consisting of enclosed primary high voltage equipment, three-phase power transformers, and enclosed secondary low voltage equipment. The ...



At the heart of this system lies the humble distribution box - your building's nerve center for electricity. With building materials evolving rapidly and power demands increasing, choosing the right ...



The above price factors in the cost to mobilize crews, erect the equipment (on steel where applicable), and pour foundations. Aside from construction costs, the price includes engineering labor.



Choose from our selection of power distribution panels, including square D circuit breaker boxes, electrical wiring and connecting, and more. Same and Next Day Delivery.



Below is a general price comparison for different substation types, based on recent market data and Farady's experience as a distribution transformer manufacturer. These figures are indicative and can ...

Contact Us

For more information, pricing, or custom energy solutions, please contact us:

Website: <https://www.gdroofing.co.za>

Email: sales@gdroofing.co.za

Phone: +27 72 418 9365

Address: 22 Electron Avenue, Isando, Johannesburg, 1600, South Africa

This document is for informational purposes only. Specifications subject to change without notice.

