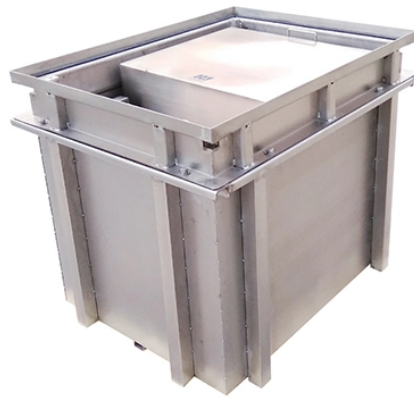


# **User Guide for Upgraded MPO Adapter Module in Supercomputing Centers**



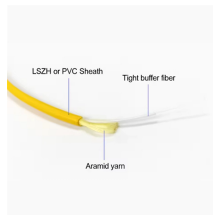
## User Guide for Upgraded MPO Adapter Module in Supercomputing C



Designed to unleash high-speed data center capabilities, MPO Cable Assemblies and Adapters use high-density MTP and MPO-style connectors to deliver streamlined connectivity, high port density, ...



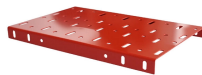
The Multiple-Push-On (MPO) optical connector is a ceramic block with holes that contain the ends of multiple optical fibers epoxied in as either single-mode or multimode types.



Understanding the basis of MTP®/MPO patch cables, different MTP®/MPO cable types, and key applications is essential for designing a reliable and scalable MTP®/MPO cabling system.



LC & MPO Adapter Modules LC/LC trunk solution  
MPO/MPO Trunk Solution Supports Base8, Base12, Base16 natively Easy to load LC or MPO Connectors up to 96 fibers using MPO adapters Front load ...



MPO connectors are transforming data center cabling. Learn about VSFF types, APC vs. UPC, inspection and cleaning, and best practices for testing.



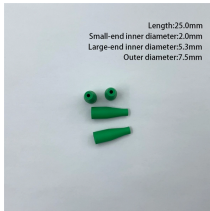
Whether you are upgrading your current infrastructure or building a new data center, understanding and applying these steps can make a significant difference in efficiency and reliability.



Guide to MPO/MTP high-density fiber optic cabling for 40G/100G data centers, covering architecture, polarity, deployment strategies, and upgrade planning.



Discover EPCOM's MPO/MTP ODF solutions for data centers. Learn about benefits, types, and installation of high-density ODFs for 400G/800G networks.



This document explains how to install and operate the Cisco NCS 2000 Series passive optical modules, the fiber shuffle, and the MPO fan-out unit. The Cisco NCS 2000 Series encompasses platforms from ...



Master MPO loopback adapter testing for data centers. Learn fiber mapping, Type A/B/C polarity, step-by-step procedures, and troubleshooting for 40G-800G networks.

## Contact Us

For more information, pricing, or custom energy solutions, please contact us:

Website: <https://www.gdroofing.co.za>

Email: [sales@gdroofing.co.za](mailto:sales@gdroofing.co.za)

Phone: +27 72 418 9365

Address: 22 Electron Avenue, Isando, Johannesburg, 1600, South Africa

This document is for informational purposes only. Specifications subject to change without notice.

