

## Venezuelan 940nm laser diode model



## Venezuelan 940nm laser diode model



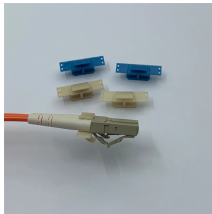
This diode can be only used in constant voltage and current. Operating voltage and current, refer to the table in paragraph II. Please do not aim the laser to people or animal. You can observe the laser spot ...



In its maximum rating diode laser operation could damage its performance or cause potential safety hazard such as equipment failure. 3. Electrostatic discharge is the main reason for the laser fault of ...



940nm laser diode Model 1a: 100mW / singlemode fiber / 14 pin Butterfly package / SMF or PMF  
Reference: 940LD-1a-0-0 ( -1: SMF ; -2: PMF)



Electrostatic discharge is the main reason for the laser fault of the diode. Take effective precautions against ESD. When dealing with laser diodes, use the wrist strap, grounding work surface and strict ...



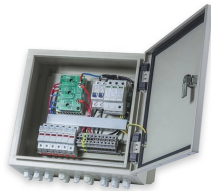
Laser diodes are classified based on continuous operation - Contact us for any special requests regarding classification or power limitation.



At Coherent, these laser bars are available in a very wide range of wavelengths and powers, with optional beam shaping such as fast-axis collimation, both-axis collimation, or even further focused to ...



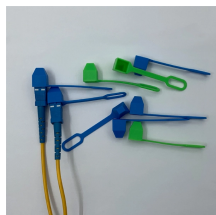
These fiber-coupled 940nm laser diodes are offered as stock items or associated with a CW or Pulsed Laser Diode Driver. They are compatible with our high speed nanosecond pulsed drivers or high ...



This diode can be only used in constant voltage and current. Operating voltage and current, refer to the table in paragraph II. Please do not aim the laser to people or animal. You can observe the laser spot ...



High brightness, quality, and reliability are the foundation of our single-mode laser diode product family. Our 940nm single-mode laser diodes are capable of delivering output power up to 300mW.



940nm 60mW VCSEL Diode VD-0940-060M-1A-01  
Features Single 860nm wavelength Multimode VCSEL Low wavelength drift

## Contact Us

For more information, pricing, or custom energy solutions, please contact us:

Website: <https://www.gdroofing.co.za>

Email: [sales@gdroofing.co.za](mailto:sales@gdroofing.co.za)

Phone: +27 72 418 9365

Address: 22 Electron Avenue, Isando, Johannesburg, 1600, South Africa

This document is for informational purposes only. Specifications subject to change without notice.

