

# Wavelength Division Multiplexer 63e1



## Overview

STM-1 63 E1 (Optical / Electrical) Add-Drop SDH Multiplexer unit is a modular platform unit with two 155.52Mbps optical / electrical interfaces, which may be used in a point-to-point, chain or ring application to provide an ultra-compact, cost effective and flexible service. ORION TELECOM NETWORKS INC. As a key member of Baudcom "MetroEdge-Express" SDH/MSPP Product family, BD-SDH63 is a carrier-class, cost-effective, compact (only 1U high) SDH/MSPP platform that is designed for applications in metro and access networks to facilitate the efficient transport of traditional TDM and emerging data. SDH-LM63, STM-1 level veneer type SDH (Synchronous Digital the Hierarchy) optical transmission systems, compliance with ITU-T and SDH standards, provides complete monitor, access, protection, network management and Ethernet access function. 52Mb/s interfaces, 12. In fiber-optic communications, wavelength-division multiplexing (WDM) is a technology which multiplexes a number of optical carrier signals onto a single optical fiber by using different wavelengths (i. This technique enables bidirectional communications over a. OP-SDH-63E1 63E1 SDH Multiplexer is a new generation multi-services transmission and access device based on SDH

technologies. It's function models design adopts G.

## Wavelength Division Multiplexer 63e1



STM-1 63 E1 (Optical / Electrical) Add-Drop SDH Multiplexer unit is a modular platform unit with two 155.52Mbps optical / electrical interfaces, which may be used in a point-to-point, chain or ring ...



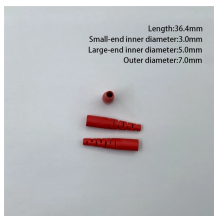
63E1 STM-1 multiplexer, two SFP optical ports, can be used as Terminal Multiplexer or an Add-Drop-Multiplexer (ADM) to build point-to-point, ring and chain transmission network.



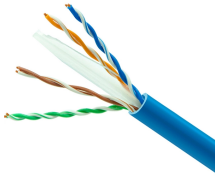
CXR's STM-1 63 E1 (Optical/Electrical) Add-Drop SDH Multiplexer unit is a modular platform unit with two 155.52Mbps optical/electrical interfaces, which may be used in a point-to-point, chain or ring ...



Normal WDM (sometimes called BWDM) uses the two normal wavelengths 1310 and 1550 nm on one fiber. Coarse WDM provides up to 16 channels across multiple transmission windows of silica fibers. ...



We produce fiber-coupled Wavelength-Division Multiplexing (WDM) devices that combine (Mux) or separate (DeMux) multiple wavelength channels into or from a single optical fiber. Two types are ...



BD-SDH63 is a standard SDH terminal multiplexer multiplexes 63 E1 signals into a STM-1 stream, with TU-12 cross-connect capability. This compact multiplexer is housed in a standard 19" 1U rack mount ...



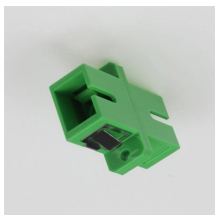
It can provide 2 STM-1 uplink interfaces and 63 E1 interfaces, adopts modular structure design for flexible service configurations according to different requirements.



IDM MSTP155-63E1 is a SDH Multiplexer, which has two STM-1 (155.52Mb/s) optical ports, 63 E1 interfaces, 4 physically separated FE ports with a bandwidth of  $N \times 2.048\text{Mbps}$  and two V.35/V.11 ports.



SDH-LM63, STM-1 level veneer type SDH (Synchronous Digital the Hierarchy) optical transmission systems, compliance with ITU-T and SDH standards, provides complete monitor, access, protection, ...



Valiant's STM-1 (SDH) Transmission Equipment provides full capability to cross-connect at E1 level between all tributaries. The equipment can be used as Terminal Multiplexer (TM) or an Add-Drop ...

## Contact Us

For more information, pricing, or custom energy solutions, please contact us:

Website: <https://www.gdroofing.co.za>

Email: [sales@gdroofing.co.za](mailto:sales@gdroofing.co.za)

Phone: +27 72 418 9365

Address: 22 Electron Avenue, Isando, Johannesburg, 1600, South Africa

This document is for informational purposes only. Specifications subject to change without notice.

