

## Wavelength Division Multiplexer Resolution



## Wavelength Division Multiplexer Resolution



At the transmitting end there are several independently modulated light sources, each emitting signals at a unique wavelength. Here a wavelength multiplexer is needed to combine these optical outputs into ...



Normal WDM (sometimes called BWDM) uses the two normal wavelengths 1310 and 1550 nm on one fiber. Coarse WDM provides up to 16 channels across multiple transmission windows of silica fibers. ...



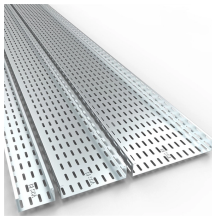
We present a novel multi-channel wavelength division (de)multiplexer (WDM) with unprecedented compactness and efficiency. To be more precise, our WDMs with four, five, and six ...



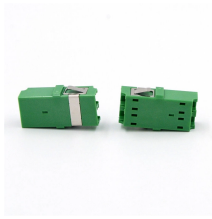
Wavelength Division Multiplexing (WDM) stands out as a cornerstone, enabling multiple data streams to travel simultaneously over a single fiber. This guide delves into the principles, types, ...



This paper discusses in detail the wavelength division multiplexing (WDM) technology, which effectively increases the communication capacity and transmission sp



Here, we develop a novel design approach that co-optimizes inverse-designed wavelength division multiplexers and distributed Bragg gratings to achieve ultra-low crosstalk without compromising ...



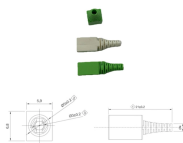
One of the problems to be solved is how to multiplex and demultiplex these densely packed optical signals. A promising approach to cope with this problem is to introduce an arrayed-waveguide ...



Key topics include the principles of wavelength multiplexing and demultiplexing, the design and optimization of WDM systems, and innovative modulation techniques that enhance data transmission ...



We present a novel multi-channel wavelength division (de)multiplexer (WDM) with unprecedented compactness and efficiency. To be more precise, our WDMs with four, five, and six ...



Wavelength Division Multiplexing (WDM) is a technique in fiber-optic communication systems that enables multiple optical signals with different wavelengths to be combined, transmitted, and ...



The authors demonstrate a cutting-edge THz signal processing on-chip active wavelength division multiplexer (WDM) system operating at THz frequencies.

## Contact Us

For more information, pricing, or custom energy solutions, please contact us:

Website: <https://www.gdroofing.co.za>

Email: [sales@gdroofing.co.za](mailto:sales@gdroofing.co.za)

Phone: +27 72 418 9365

Address: 22 Electron Avenue, Isando, Johannesburg, 1600, South Africa

This document is for informational purposes only. Specifications subject to change without notice.

